



Spatial Variability in Soil Properties, Delineation Site-specific Management Division Based on Soil Fertility Using Fuzzy Clustering in Gwalior, Madhya Pradesh, India

T. C. Yadav ^{a,b*}, Y. P. Singh ^b, Shashi S. Yadav ^b,
Akhilesh Singh ^b, Subhash ^c and Tirunima Patle ^b

^a Faculty of Agriculture, VGU, Jaipur 302012, Rajasthan, India.

^b Department of Soil Science and Agricultural Chemistry, RVSKVV, Gwalior, 474002, Madhya Pradesh, India.

^c ICAR-Indian Institute of Soil Science, Bhopal Madhya Pradesh, 462038, India.

Authors' contributions

This work was carried out in collaboration among all authors. All authors read and approved the final manuscript.

Article Information

DOI: 10.9734/IJPSS/2023/v35i62840

Open Peer Review History:

This journal follows the Advanced Open Peer Review policy. Identity of the Reviewers, Editor(s) and additional Reviewers, peer review comments, different versions of the manuscript, comments of the editors, etc are available here: <https://www.sdiarticle5.com/review-history/97725>

Original Research Article

Received: 11/01/2023

Accepted: 16/03/2023

Published: 17/03/2023

ABSTRACT

Farmers who want to improve nitrogen usage efficiency (NUE) and crop yield must have access to information regarding the geographical variability and distribution of soil parameters. Fertilizer application relying on soil characteristic maps and fertilizers recommendations may help reduce fertilizer input without sacrificing crop production. The current research focused heavily on evaluating the variability of soil fertility status in the Madhya Pradesh Gwalior region using

*Corresponding author: E-mail: tikam.yadav63540@gmail.com;

geostatistical techniques. To do this, 150 GPS-based surfaces (0–15 cm) soil samples were obtained from the Gwalior region's five districts (Gwalior, Shivpuri, Datia, Guna, & Ashok Nagar) during crop harvest during the rabi season of 2019–20. Statistics and geo-statistics were used to analyze the results of the laboratory analysis. The analysis revealed that the soil samples' pH, EC, SOC, and CaCO₃ values, respectively, varied from 4.40 to 8.30, 0.09 to 1.03 dSm⁻¹, 2.0 to 10.60 gkg⁻¹, and 3.0 to 24.0 gkg⁻¹. In contrast, the amounts of N, P, K, and S that are present in soil vary from 102.0 to 356.0 kg ha⁻¹, 6.0 to 61.0 kg ha⁻¹, 114.0 to 896.0 kg ha⁻¹, and 5.90 to 49.20 mg kg⁻¹, respectively.

Through building semi-variograms and mapping the data utilizing standard kriging techniques, the information was studied using both traditional statistics and geostatistics. For soil properties, semi-variograms were created, and their geographical distributions were delineated. The Nugget/Sill (Co/Co+ C) ratio for the modeled variables revealed moderate to high spatial dependences. The best-fit models for the reported soil characteristics were exponential, spherical, and circular. The findings of this research demonstrated that soil fertility quality varied significantly across the Gwalior area. This knowledge may aid in making choices about crop succession and the usage of plant nutrients to increase farmers' financial returns.

Keywords: Geostatistical approach; NUE; soil fertility; productivity.

1. INTRODUCTION

Geographical Information Systems and Remote Sensing are the requisite backbones for the planning and management in agriculture. Understanding the spatial variability and distribution of soil characteristic is essential for growers seeking to increase nutrient use efficiency and productivity. Applying fertilizer based on soil characteristics related to fertilizer recommendations can help minimize fertilizer input without yield loss. Geo-statistics is a useful tool that is widely used to analyze spatial variability, interpolate between observation points, and ensure interpolated values with a certain error using a minimum number of observations [1-3]. Information about the spatial variability of soil physicochemical properties and microbiological activity is very important in the selection of crops and cultivation systems, and also broadens ideas about prevailing management practices [4-6]. The spatial variability of pH, EC, organic matter NPK and available micronutrients has been studied by various researchers by comparing soils and their management systems to refine and implement site-specific nutrient management [7,8].

Soil is one of the main components of a sustainable agricultural production system and its quality is determined by its physicochemical characteristics and its nutrient supply capacity which is ultimately reflected in crop productivity. Soil quality is defined as the ability of a particular soil type to function, within ecosystems and land use boundaries, to maintain productivity, maintain environmental quality and improve plant

growth and human health [9]. Soil is inherently heterogeneous as many factors contribute to its formation and the complex interactions of those factors [10]. According to Jha and Mohapatra, [11] it is well-known that changes in land use, long-term cultivation & mineral fertilization can cause significant variations in soil properties. Soil properties & characteristics mainly depend on the geological formation, topography, and climate of the region where the land is located. Dokuchaev considers soils as independent natural bodies, each with a single morphology resulting from a unique climate arrangement, living matter, parent matter, relief, and age of the landform. The spatial variations of soil physicochemical properties have been reported as the primary source of variability in crop yields. The similar spatial patterns of soil water content, cation exchange capacity, SOC, and crop yield in the sandy soil of Poland. Understanding the spatial variability of soil physicochemical characteristics, in both its static (e.g., texture and mineralogy) and dynamic (e.g., water content, compaction, electrical conductivity, nutrient and carbon content) forms is necessary for SSSM, as it is directly contributing to variability in crop yields and quality.

At the field, catchment, and regional sizes, geostatistical is a potent technique for estimating spatial variability of soil characteristics and soil nutrients. Geo-statistics is the most confident, strongest, and broadest approach for interpolation, considering geographic variance, location, and sample distribution. Geostatistical approaches interpolate using mathematical and statistical functions, and their foundation is

statistical data. Based on autocorrelation and the spatial organization of observed points, Kriging interpolation predicts unknown points [12]. Kriging interpolation may identify soil property-related spatial characteristics. Numerous research employs geo-statistics to map geographical variability and soil properties.

The goal of this study was to look at the geographical variability of certain physicochemical parameters in the soybean-wheat belt of Madhya Pradesh. Soil health, plant nutrient management, erosion, and water stability are only some of the outcomes of assessing soil's spatial variability using geostatistical techniques in a wide range of geographic and ecological contexts [13]. To make appropriate management planning for sustaining the productivity of croplands, spatial distribution maps of key soil properties are needed. particle size distribution viz: pH, EC, Soil organic carbon, available P, K, and micronutrients are important soil properties that direct the decision of soil management for sustainable crop production. Therefore, the results on spatial characteristics of key soil properties are useful for near-future management decisions of producers and for improving soil nutrient management. Fertilization based on maps with recommendations related to soil fertility may also lead to reduced fertilizer inputs without reducing yield [14]. This study aimed at determining and mapping the key soil physical and chemical properties of the dominant Soybean – Wheat belt of central India using geostatistical techniques to support near-future management decisions.

The clustering algorithm is an efficient way to identify solution points with heterogeneous data sets. With multiple comparisons using cluster analysis, it is possible to identify a subregion within areas with similar characteristics. Aaron et al. [15] used crop yield data while Fleming et al. employed fuzzy soil characteristics. Various authors have identified management zones using principal component analysis and fuzzy clustering techniques based on soil parameters [16,17].

2. MATERIALS AND METHODS

2.1 Site Details

The Gwalior division is an administrative subdivision of Madhya Pradesh as well as rich in natural resources which covers these five

districts Ashoknagar, Datia, Guna, Gwalior, and Shivpuri. The area of Gwalior division is spread between 24° 10'N to 26°48'N latitude to 76°31'E to 79°15'E longitude and the elevation ranges from 160 to 529 m above mean sea level. The region is semi-arid characterized by black less fertile soil, average annual rainfall of 500 to 800 mm/year, and winter temperatures that sometimes drop below 5 degrees Celsius. The division falls in the gird Agro- climatic zone of Madhya Pradesh. The soil moisture regime observed is Ustic. The topography extends from west to east direction with medium slope gradient of 0- 6 percent. Agriculture is the main occupation of the people in this division and the major crops are rice, wheat, pulses, millets, potato, and seasonal vegetables. GPS based one hundred fifty (150) surface soil samples were collected scientifically from different locations across the Gwalior division.

2.2 Soil Survey and Sampling Techniques

Based on land use and soil association maps, geography, and soil heterogeneity, the research area's agricultural land was randomly sampled. GPS locations were used to gather field data and soil samples. To prevent fertilizing during crop cultivation, 150 surface soil samples (0-15 cm) were gathered from farmers' fields during the off-season. Each major sampling station received 1.0 kg of typical composite soil sample in a labeled sample bag. Animal faces accumulation sites, poorly drained locations, and other unrepresentative soil samples were avoided. Latitude, longitude, topography, slope, elevation, land use type, crop type, local soil name, sample depth, soil color, crop residue management, rate of previous year fertilizer application, and type were gathered from each site during soil sampling (Fig. 1).

2.3 Analysis of Soil Physico-chemical Properties and Soil Micronutrients

The soil pH was measured both in a soil–water suspension (1:2.5). The electrical conductivity (EC) was determined from the soil–water suspension (1:2.5). the soil organic carbon (SOC) in soil was determined using the method described by Walkley and Black [18]. The calcium carbonate in the soil was carried out using a rapid back titration method as described by Jackson [19]. and available N of the soil samples were analyzed by standard procedures. Phosphorus (Bray P, $\text{NH}_4\text{F} + \text{HCl}$) and potassium (NH_4OAc), the methods outlined by Bray and

Kurtz [20] and Black [21] were adopted, respectively. The available sulphur was extracted by 0.15 per cent CaCl_2 solution and the concentration of sulphur was determined by the turbidimetric method using Spectrophotometer [22]. Phyto-available iron (Fe), zinc (Zn), copper (Cu) and manganese (Mn) contents of soil were determined using DTPA extraction technique [23] followed by analysis using atomic absorption spectrophotometer. Hot water-soluble boron in soil was analyzed by the azomethine-H method as outlined by Berger and Truog [24].

2.4 Descriptive Statistics

The soil parameters were estimated using descriptive statistics of the soil data. SPSS 21.0 program calculated soil parameter minimum, maximum, mean, standard deviation, coefficient

of variation, and skewness values. According to Webster [25], soil data with positive or negative skewness deviates most from normalcy. Consequently, parameter distributions with skewness are likewise considered normal. For variables lacking normal distributions, those with positive or negative skewness values larger than 0.5 were square root transformed, while those with values greater than 1.0 were log-transformed. Data showed non-normal distribution and were subjected to the lognormal distribution before the geostatistical analysis, data of all the soil variables were tested for normality using Kolmogorov-Smirnov (K-S) and skewness. The calculation of semi-variance of the soil variable according to Goovaerts et al., [26]. A Pearson correlation matrix among all the soil variables was also generated to investigate the association between the variables and Microsoft Excel.

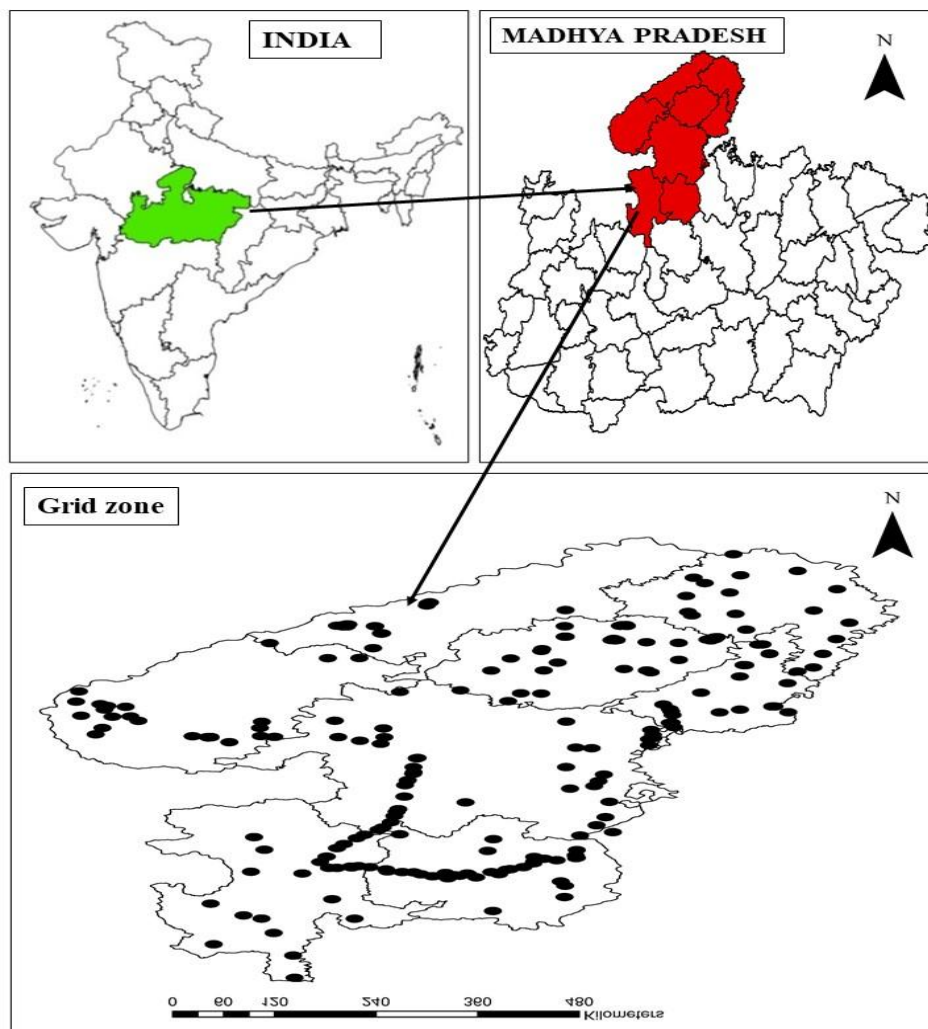


Fig. 1. Location map of the study area

2.5 Geostatistical Analysis

Arc GIS 10.3.1 statistical analyzer was used for semi-variogram modeling and selecting the best semi-variogram model. Before fitting the semi-variogram models, the asymmetric soil properties were converted to a semi-normal distribution using the natural logarithm. The data was re-transformed using the inverse transformation.

$$\gamma(h) = \frac{1}{2N(h)} \sum_{i=1}^{N(h)} [Z(x_i) - Z(x_i + h)]^2$$

Where: N (h) is the number of pairs of points distant from each other by h.

Several semi variogram models were evaluated to best fit with the experimental data in the ArcGIS v 10.3. 1 The circular, spherical, tetra spherical, exponential, Gaussian, K-Bessel, J-Bessel, and stable models were evaluated for different soil parameters. A semi variogram model with the lowest value of nugget/sill ratio was selected as the best-fit model for the given soil properties. The exponential, Gaussian, spherical, and circular models were best fitted for the studied soil properties.

Exponential model:

$$\gamma(h) = C_0 + C \left[1 - \exp \left\{ -\frac{h}{r} \right\} \right] \text{ for } h > 0$$

Where,

h = lag distance,
 C₀ = nugget variance,
 C = structural variance (partial sill) and
 r = range

The parameters of the semi variogram, which offer information on the spatial structure of the provided soil variables and serve as input for the kriging interpolation, were computed. These parameters include the nugget (C₀), partial sill (C), sill (C + C₀), and range (r).

The characteristics that describe the spatial organization of a soil property are the mass/threshold ratio, also known as (C₀)/ (C + C₀), and extension. The distance across which the values of the various soil properties relate to one another is defined by the range. The low value of (C₀)/ (C + C₀) and the typically large range suggest that kriging may be used to obtain the high accuracy of the feature [12]. The term

"ecosystem" refers to a group of people who work in the construction industry. The term "ecosystem" refers to a group of people who work in the construction industry [12]. The ordinary kriging (OK) approach was carried out in order to estimate a variety of soil properties at places that had not been tested. According to the findings of Schepers et al. [27], OK is the most accurate and objective approach to prediction for soil samples that have been randomly dispersed. Since OK also lessens the influence of outliers on prediction, it is the method that is most suited for estimating soil parameters at places that have not been sampled. A method called cross-validation was used to determine how accurate the soil maps were [28]. Mean absolute error (MAE), and mean squared error (MSE) assesses prediction accuracy, whereas mean squared error indicates prediction efficacy. The mean absolute error (MAE) is calculated by adding together all the differences between the observed and anticipated values [29].

$$MAE = \frac{1}{N} \sum_{i=1}^N z(x_i) - \hat{z}(x_i)$$

Where z₁ is the anticipated value at point i. The SML measurement does not reveal inaccuracy, hence MSE is computed.

$$MSE = \frac{1}{N} \sum_{i=1}^N [z(x_i) - \hat{z}(x_i)]^2$$

The smaller value of MSE indicates a more accurate estimation.

2.6 Principal Component Analysis

Principal component analysis (PCA) is a method of multivariate analysis that uses features or related variables and identifies orthogonal linear regressions of features those summarize the main sources of data variability. PCA is a technique that reduces the number of dimensions in which the analysis is performed. As a consequence of using a correlation matrix that was comprised of the chosen soil attributes as the input to the analysis rather than the covariance matrix, a normalized principal component analysis was produced. The study consisted of a significant number of principal component variables (PC variables). It has been postulated that the principal components (PC) that have high Eigen values are the ones that are best able to describe the characteristics of the

field. To create the management domain classes in the present research, PCs with eigenvalues of more than 1.0 were chosen.

2.7 Fuzzy Cluster Algorithm

The term "ecosystem" refers to a group of people who work in the construction industry. Fuzzy cluster analysis quantitatively reduces within-group variation and maximizes between-group variance to create homogenous groupings. The term "ecosystem" refers to a group of people who work in the construction industry [30]. Fuzzy c-mean, an unsupervised continuous classification approach [31], was utilized to split the field into 2-8 clusters using FuzME software developed at the Australian Center for Precision Agriculture [32]. According to Xin-Zhang et al., we determined that eight clusters were the maximum number of viable applications for management zones. An iterative procedure that began with a random set of cluster means was used to select who would be included in each cluster. The average that was closest to each observation was given to it. Based on the distance between the observation and the cluster mean, the new means were computed for each cluster. Euclidean distance was utilized to compute the distance of data points from their cluster midpoints based on the result of covariance and statistical independence. The following parameters were utilized in the FuzME program: maximum number of iterations = 300, stopping criteria = 0.0001, the minimum number of zones = 2, the maximum number of zones = 8, and exponent fuzzy = 1.5. [33], and the normalized classified entropy (NCE), have been utilized as indications of the ideal cluster number in the following ways:

$$FPI = 1 - \frac{c}{c-1} \left[1 - \frac{\sum_{i=1}^c \sum_{k=1}^n (\mu_{ik})^2}{n} \right]$$

$$NCE = \frac{n}{n-c} \left[- \frac{\sum_{k=1}^n \sum_{i=1}^c \mu_{ik} \log_2(\mu_{ik})}{n} \right]$$

where c is the number of clusters and n is the number of observations, μ_{ik} is the fuzzy membership and log is the natural logarithm. FPI measures the amount of blur created by a specified number of classes. ICS values can range from 0 to 1. Values close to 0 indicate distinct classes with little member sharing, and values close to 1 indicate no distinct classes with a large amount of member sharing. The NCE is a rough calculation of the chaos that would result

from adding up the number of classes. When the index is the lowest, signifying the smallest membership share (FPI) and greatest organization size clusters (NCE), the method calculates the best number of clusters for each determined index (FPI and NCE). In addition, analysis of variance was utilized to show the variation amongst MZs. SAS 9.2 was used to compile the descriptive statistics. Geostatistical mapping and analysis were carried out using ArcGIS 10.3.1. FuzME software [32] was utilized to develop the c-means fuzzy clustering algorithm.

3. RESULTS AND DISCUSSION

3.1 Descriptive Statistics of Soil Properties of Gwalior Division

The descriptive statistics of soil attributes are presented in table 1 the soil the pH, electric conductivity (EC), soil organic carbon (SOC) and CaCO₃ content in the soil were varied from 4.80 to 8.30, 0.09 to 1.03 dS m⁻¹, 2.0 to 10.60 g kg⁻¹ and 3.0 to 24 g kg⁻¹ with mean values of 7.36, 0.34 dS m⁻¹, 5.62 g kg⁻¹ and 10.12g kg⁻¹, respectively. Available N, P, K and S content in the soils of Gwalior division ranged from 102.0 to 356.0 kg ha⁻¹, 6.0 to 61.0 kg ha⁻¹, 114.0 to 896.0 kg ha⁻¹ and 5.90 to 49.20 mg kg⁻¹ with mean value of 227.79 kg ha⁻¹, 24.92 kg ha⁻¹, 343.13 kg ha⁻¹ and 17.55 mg kg⁻¹, respectively. This may be due to organic S constitutes the major share of total S present in soil. Zn, Cu, Fe, Mn, and B contents in soil varied from 0.10 to 3.19, 0.69 to 7.30, 1.90 to 25.30, 1.40 to 44.0 and 0.05 to 4.43 mg kg⁻¹ with mean values of 1.0, 1.93, 9.91, 13.17 and 1.86 mg kg⁻¹, respectively in the whole study area.

The variability of attributes within the study area was interpreted using the coefficient of variation (CV). Which is the ratio of the standard deviation to the mean, expressed, as a percentage is a useful measure of overall variability. The values of the coefficient of variation for all the variables observed were very different ranging from 8.96 % (pH) to 61.10% (Av-P). Since pH had the least variability (CV = 8.96 %). Since pH represents the log scale was due to the transformed measurement of hydrogen ion concentration. which could be as a result of the uniform conditions in the area such as little changes in slope and direction leading to a uniformity of soil in the area the range of CV for the area suggested different degrees of heterogeneity among the properties studied.

Table 1. Descriptive statistics of soil properties of Gwalior division

Parameters	Unit	Minimum	Maximum	Mean	SD	CV (%)	Skew.	Kurt.
pH		4.80	8.30	7.36	0.66	8.96	-1.74	2.86
EC	dSm ⁻¹	0.09	1.03	0.34	0.15	43.60	1.18	2.51
OC	gm kg ⁻¹	2.00	10.60	5.62	1.94	34.51	0.79	0.12
CaCO ₃		3.00	24.00	10.12	4.47	44.17	0.82	0.69
N	kg ha ⁻¹	102.00	356.00	227.79	51.56	22.63	0.22	-0.36
P		6.00	61.00	24.92	14.20	57.00	0.53	-1.08
K		114.00	896.00	343.13	172.37	50.23	1.58	2.23
S	mg kg ⁻¹	5.90	49.20	17.55	8.94	50.95	1.12	1.30
Cu		0.69	7.30	1.93	1.06	54.81	2.39	8.05
Zn		0.10	3.19	1.00	0.58	58.42	1.20	1.55
Fe		1.90	25.30	9.91	5.71	57.63	0.95	0.12
Mn		1.40	44.00	13.17	7.97	60.49	1.34	2.55
B		0.05	4.43	1.86	1.14	61.10	0.23	-0.93

3.1.1 pH

Soil pH play very important role as it control the physical condition and availability of nutrients of soil to a great extent. It indicates the H⁺ and OH⁻ ions activities, presence of exchangeable bases such as Mg, Ca and Na⁺ and also gives hold of hydroxyl ions over hydrogen ions. The pH value of division varied from 4.80 to 8.30 with the mean value of 7.36. It had coefficient of variation 8.96 per cent.

The study of division is clearly showing soil pH that the maximum area falling under the slightly acidic to alkaline nature of the soil. Under low to medium rainfall conditions, accumulation of bases especially sodium takes place is the primary reason for alkaline soil pH. Higher pH values were also recorded in degraded vertisols in Purna valley region by Balpande et al. [34]. Similar results for the soil of MP and MH were also reported by Shilpa et al. [35], Singh et al. [36] and Sharma et al. [37].

The pH showed significantly positive correlation with available EC ($r=0.270^{**}$), CaCO₃ ($r=0.211^{**}$), P ($r=0.242^{**}$), K ($r=0.242^{**}$) Cu ($r=0.130^{**}$) but negative significant relationship with Fe ($r=-0.479^{**}$) and Mn ($r=-0.247^{**}$). Similar results were reported by Yadav et al. [38], Singh et al. [39] and Singh et al. [36].

3.1.2 Electrical conductivity

An examination of data indicated that the EC of soils of division varied from 0.09 to 1.03 dsm⁻¹ with the mean value of 0.34 dSm⁻¹, respectively. Highest EC soils were found in Gwalior district and lowest value in Shivpuri district division. The EC of soil exhibited 43.60 percent CV, which was moderate variability. Such variation in EC values

in the division may be due to different soil operations including variations in fertilizer application and other crop management practices under different land use systems [40,41]. Also, similar results were recorded by Yadav et al. [38] and Singh et al. [39].

3.1.3 Soil organic carbon

The organic carbon of soils of five districts of division was recorded to range between 2.0 to 10.60 with the mean value of 5.62 kg ha⁻¹. The results clearly showed whole zone had moderate variability in soil organic carbon. Similar results were also reported by Yadav et al. [38] in the soils of Alirajpur district of Madhya Pradesh, Singh et al. [39] in soils of Bhind district and the soils of Nagore district.

The lower content of OC in soils was due to a higher temperature which influences rapid rate of OM oxidation. Similar results were reported by Nazif et al. [42]. The degradation of organic matter takes place rapidly with the cover lower vegetation. Sharma, [43] also found similar Amritsar district. The large variability of organic carbon among districts is due to in the land use pattern [44].

3.1.4 Available nitrogen

Available nitrogen content in soils of Gwalior division (Ashok Nagar, Shivpuri, Guna, Datia and Gwalior districts) ranged from 102.0 to 256.0 kg ha⁻¹ with the average value of 227.79 kg ha⁻¹. It was also found that variability in available N content in soil of Gwalior division is 22.63 per cent. The available N showed positive relationship with available EC ($r=0.171^{**}$), OC ($r=0.832^{**}$), K ($r=0.388^{**}$), Cu ($r=0.195^{*}$), Zn ($r=0.207^{**}$) and Fe ($r=0.199^{*}$). The results are

clearly showed the increase OC in the soil also increases available N, K and micronutrients. The positive relationship between available N and Organic carbon due to the mineralization of SOM in the soil. Similar study was noticed by Verma et al. [45] and Meena et al. [46]. The available nitrogen content in soil generally depends on altitude, rainfall and temperature and application of FYM, fertilizer schedule of previous crop and soil management practices etc. [47]. Positive relationship between OC and available nitrogen confirm that organic matter is chief source of available nitrogen. Sharma, [43] and Subhash et al. [48] also found the similar results.

3.1.5 Available phosphorus

Available phosphorus content in soils of Gird zone division varied from 6.0 to 61.0 kg ha⁻¹ with a mean value of 24.92 kg ha⁻¹. It had variability in available P content in soil of division are 57.0 per cent, the highest variability was seen in Ashok Nagar district. The available P showed positive significant relationship with pH ($r=0.242^{**}$) negative significant relationship with Cu, Mn, Zn and Fe. The results are clearly showed the antagonistic relation with available P and DTPA-Zn, Cu, Mn, Fe. Similarly result recorded by [38, 48, 46, 43, 49 and 39].

3.1.6 Available potassium

Available potassium content in soils of Gwalior division (Ashok Nagar, Shivpuri, Guna, Datia and Gwalior districts) ranged from 114.0 to 896.0 kg ha⁻¹ with mean value of 343.13 kg ha⁻¹. In the study of different districts of division variability of higher showed in Datia district. The available K showed positive relationship with pH ($r=0.242^{**}$), OC ($r=0.464^{**}$), CaCO₃ ($r=0.211^{**}$) and N ($r=0.388^{**}$). The results are clearly showed that the increases to Available K in soils also increases Available N. [49, 50, 51, 39, 38] also reported similar findings.

3.1.7 Available sulphur

Available sulphur content in soils of division (Ashok Nagar, Shivpuri, Guna, Datia and Gwalior districts) ranged from 5.90 to 49.20 kg ha⁻¹ with the average value of 17.55 kg ha⁻¹. It was also found that CV in available S content in soil of division are 8.94 per cent. Reported similar result by [38, 48, 46 and 43].

3.1.8 Copper (Cu)

Available copper constitutes in soils of division was ranged between 0.69 to 7.30 mg kg⁻¹ and

average value was 1.93 mg kg⁻¹. It was found that moderate variability in DTPA extractable Cu content in soil of Gwalior division. The DTPA-extractable Cu showed positive relationship with N ($r=0.195^{*}$), S ($r=0.169^{*}$), Zn ($r=0.215^{**}$) and Fe ($r=0.374^{**}$) and negative relationship with P ($r=0.193^{*}$). Copper is a very important constituent of several enzymes like: amine, oxidase, super oxide dismutase and plastocyanin, it also acts as an activator for several enzymes. Copper essential for maintaining hormonal activities N₂ fixation and oxidation reduction reactions. Similar findings also recommended by Singh [52] and Mandloi [41].

3.1.9 Zinc (Zn)

Zn content in soils of Gwalior division was ranged between from 0.10 to 3.19 mg kg⁻¹ with the mean value of 1.0 mg kg⁻¹. It had variability in DTPA extractable Zn content in soil of division is 58.42 per cent. The minimum variability shows in soils of Guna district. The DTPA-extractable Zn was significant negative correlation with available P ($r= -0.197^{*}$). Similar results reported by [53, 54, 48].

3.1.10 Iron (Fe)

The Iron content in soils of division varied from 1.90 to 25.30 mg kg⁻¹ with a mean value of 9.91 mg kg⁻¹. The soil pH and EC affects the availability of iron content in soil. In surface soil DTPA iron content has no regular pattern of distribution (Nayak et al., 2002). This type of variation in DTPA Fe content may be due to the cropping pattern and soil management practices adopted by farmers. Similar results were also reported by, [37, 48 and 46].

3.1.11 Manganese

In the study area of division, the available Mn was found sufficient in samples analyzed. This may be due to nature of parent material and neutral pH of soil as mentioned in the findings by Meena et al. [46]. Similar observations were also analyzed by Singh et al. [36] in Ghazipur district of Uttar Pradesh and Singh [52] in Neemrana panchayat samiti of Alwar district. Such results were also reported by Kumar [49], Gupta [55] and Sharma et al. (2003). The DTPA extractable Mn content in soils of division was ranged between from 1.40 to 44.0 mg kg⁻¹ with the mean value of 13.17 mg kg⁻¹. The DTPA-extractable Mn was showed positively relationship with the

Zn ($r=0.266^{**}$) and Fe ($r=0.238^{**}$). Similar relationship between DTPA Cu and Fe, OC and CaCO_3 was also reported by [53, 56,57,58; 59, 39, and 38].

3.1.12 Hot water-soluble Boron

The hot water-soluble B contents in soils of Gwalior division (Ashok Nagar, Shivpuri, Guna, Datia and Gwalior districts) was had ranged between 0.05 to 4.43 mg kg^{-1} with the mean value of 1.86 mg kg^{-1} . The increase Available-S in the soil also the availability of boron increase. The results reported by [56, 57, 58, 41, 39, and 38, 48].

3.2 Geostatistical Techniques and Spatial distribution of Selected Soil Properties

Geostatistical techniques, such as kriging and variogram analysis, have been used to analyze the spatial variability of soil properties in Latin-American [60]. These techniques have shown that soil fertility varies widely within fields and between different crops [61,62,63]. In general, soils in these regions are characterized by low fertility due to the high leaching of nutrients caused by heavy rainfall [64, 65, 66].

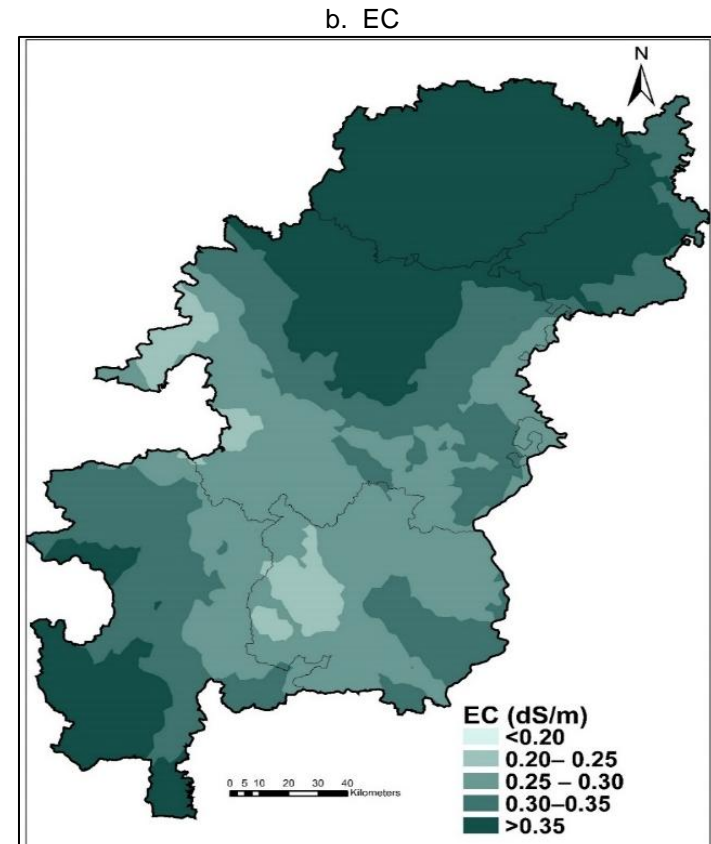
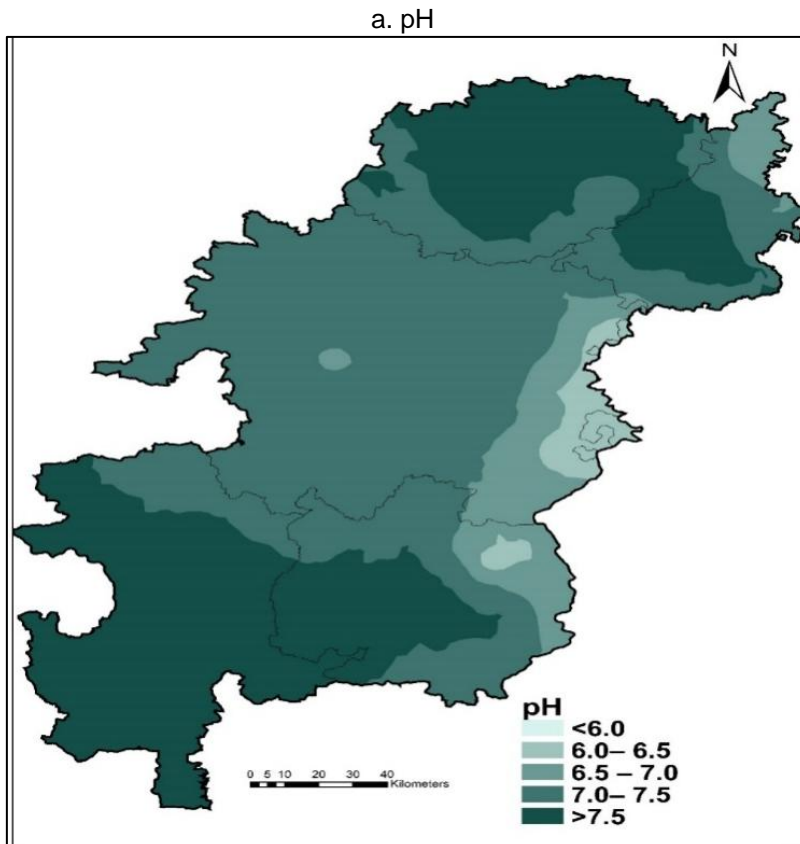
The semi-variogram was computed, and the most suitable model for capturing the spatial organization of the various soil attributes was selected. Table 3 displays the findings of the semivariogram study. Except for AP, AK, Fe, and Mn, for which the circular, pentaspherical, and exponential Gaussian models are more suited, the spherical model is the most acceptable theoretical model for most soil parameters. Most soil characteristics were found to be consistent with the spherical model, as reported by several authors [67,68,3]. Soil qualities are shown to be spatially autocorrelated, with structural variables including proximity to streams or rivers, parent material, mangrove ecosystem features, and water table depth, and human-induced factors include agricultural management methods, soil, and fertilizer. The geographic associations between soil attributes were established by the applications and the dominant farming techniques in the research region [26]. The

Nugget to sill ratio was adjusted for the studied soil characteristics (Table 3). The nugget and sill interaction exemplifies how soil qualities vary from one location to the next. The criteria used in this research are quite like those described by Cambardella et al [12]. A low ratio (below 25%) indicates that the variable is very geographically dependent. If the ratio is between 25% and 75%, the variable has moderate dependency; otherwise, it has weak spatial dependence. Moderate spatial dependency was seen for the most of the soil properties in this research; this was ascribed to the synergistic impact of proximity to the sea and the mangrove environment. Due to the many rivers, streams, and natural alluvial materials in this area, substantial hydrological processes occur. Some soil parameters showed moderate spatial dependency, which may be related to fertilization and soil management activities. Jiang et al. [67] and Amirinejad et al. [69] found comparable findings. Moreover, AN, AP, AK, and Mn have high concentrations that may be linked to biological processes including naturally occurring disturbances in mangrove ecosystems, hydrological variances, nutrient cycling, and small-scale biotic and abiotic interactions, which are particularly visible in the research region. Fig. 2 shows soil property distribution maps. In the scrub forest and surrounding surroundings, most soil nutrients and SOC were high, while in other sections of the research area where most of them were planted, they were low. Even though these agricultural soils were deficient in nutrients or used fewer inorganic fertilizers and unprotected multi-species field management, leaf litter and enhanced biological activity improved mangrove nutrient content. Spatial variation analysis results in the form of pH, EC, OC, CaCO_3 , N, P, K, S, Cu, Zn, Fe, Mn, and B maps are shown in Figs. 2 (a) to (m). The map gives quantitative information on nutrient content that may be utilized to execute site-specific nutrient management suggestions have been implemented to optimize the use of resources and increase agricultural productivity in these regions [70]. Precision agriculture technologies [71], such as yield monitoring [72], soil sampling [73], and remote sensing, have been used to identify spatial variability in soil properties and tailor management practices to specific areas.

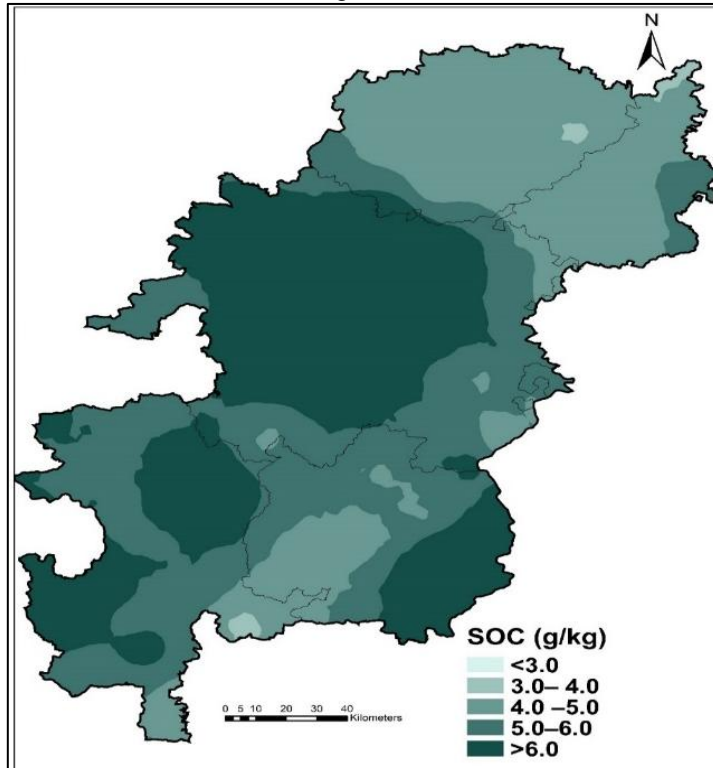
Table 2. Theoretical model parameters fitted to experimental semi-variograms for soil properties

Parameters	Trans formation	Model	C ₀	C + C ₀	Range(km)	C ₀ /C+C ₀ *100	Spatial dependence
pH	Non	Exponential	0.25	0.58	0.93	42.63	Moderate
EC	Non	Exponential	0.02	0.02	1.66	66.69	Moderate
SOC	Non	Exponential	1.92	5.17	1.14	37.15	Moderate
CaCO ₃	Non	Exponential	7.92	11.81	0.19	67.05	Moderate
N	Non	Exponential	1606.84	3082.11	0.56	52.13	Moderate
P	Non	Exponential	155.90	225.84	0.16	69.03	Moderate
K	Non	Exponential	15601.95	39711.67	0.69	39.29	Moderate
S	Non	Exponential	99.82	380.45	0.39	26.24	Moderate
Cu	Non	Exponential	0.77	1.48	0.15	52.11	Moderate
Mn	Log	Exponential	0.62	0.69	0.01	89.97	High
Fe	Log	Exponential	0.36	0.46	0.54	79.81	High
Zn	Log	Exponential	0.30	0.54	0.49	55.91	Moderate
B	Non	Rational Quadratic	0.79	1.30	0.09	60.42	Moderate

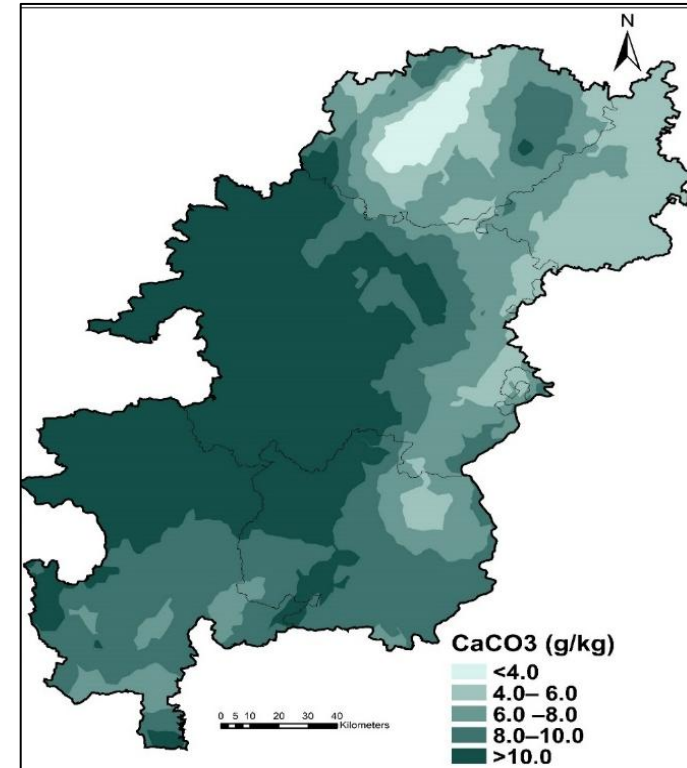
Abbreviations – C₀= Nugget, C= Partial sill, C+C₀, = Sill



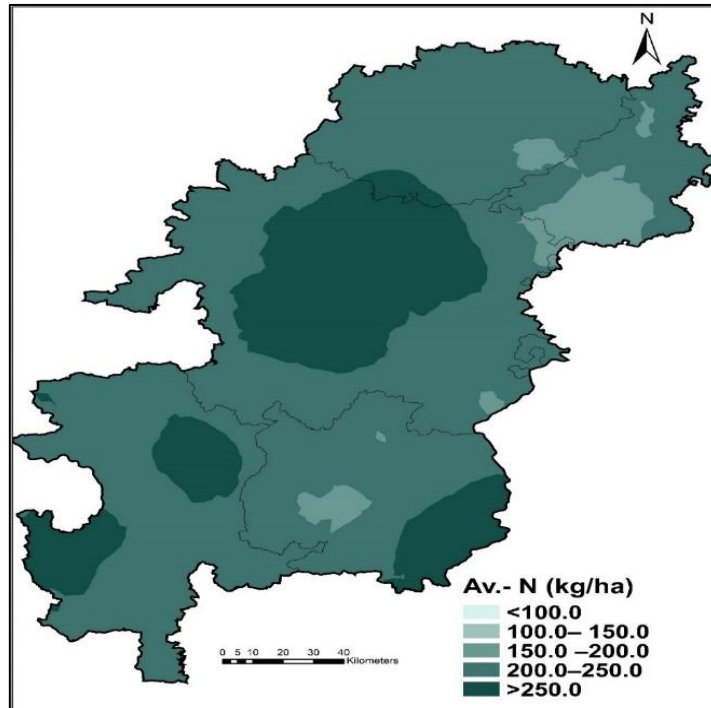
c. Soil organic Carbon



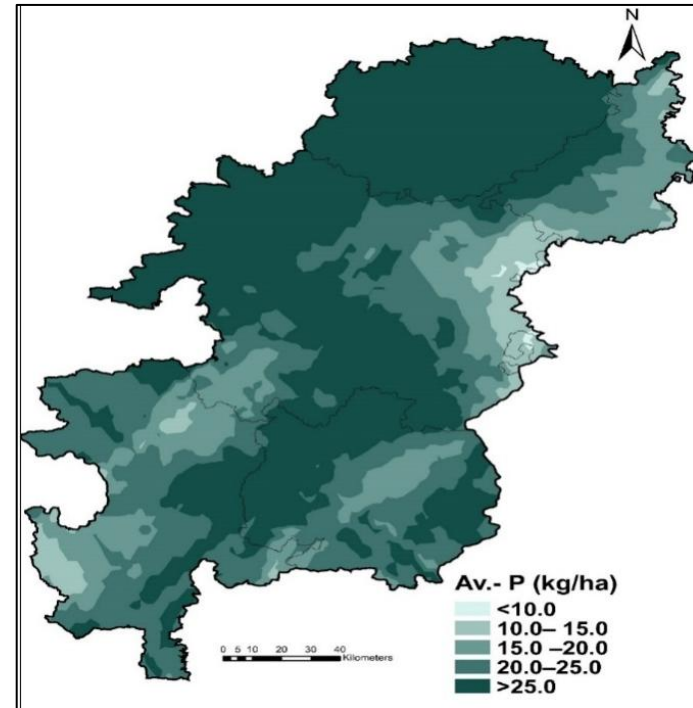
d. CaCO₃



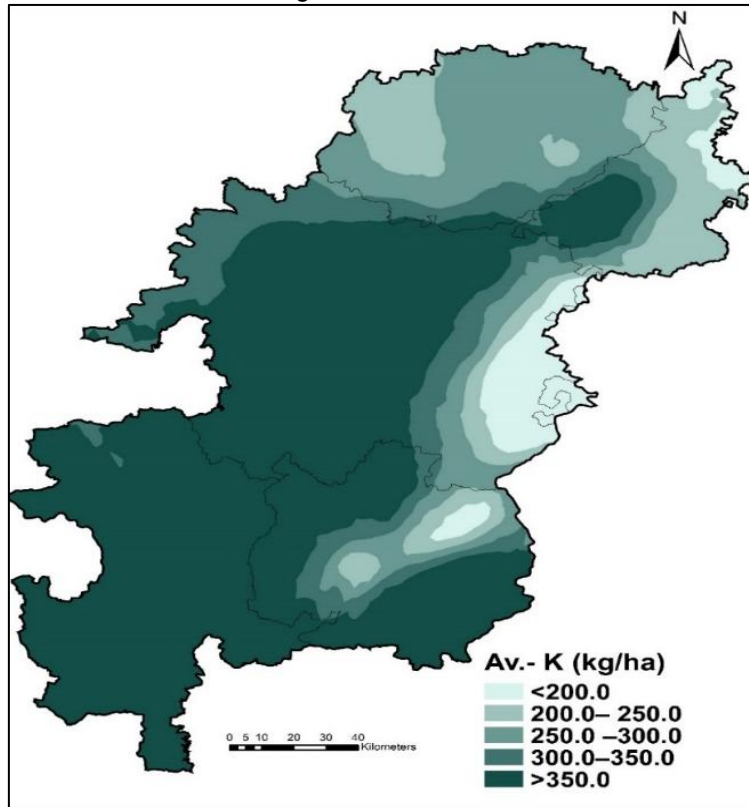
e. Available N



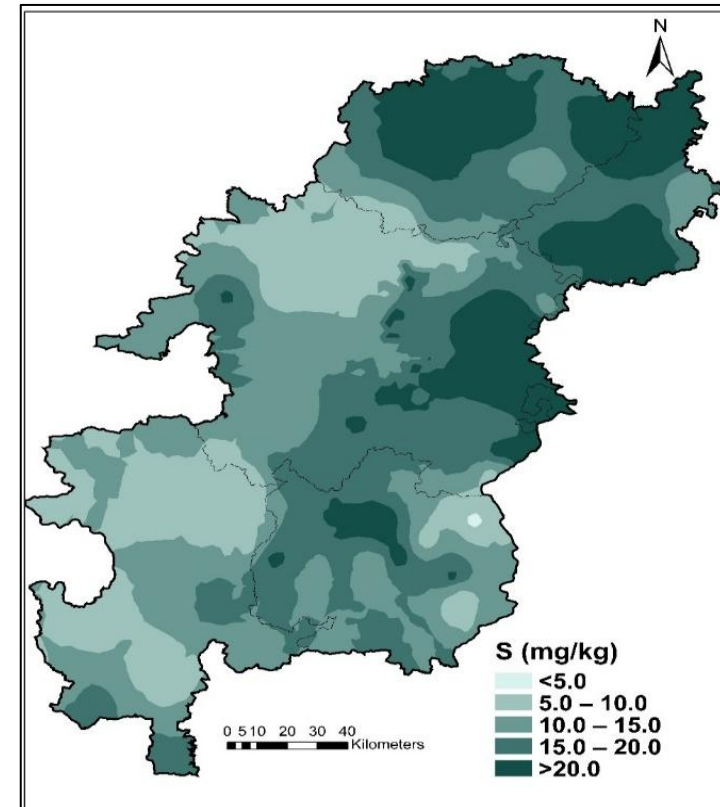
f. Available P

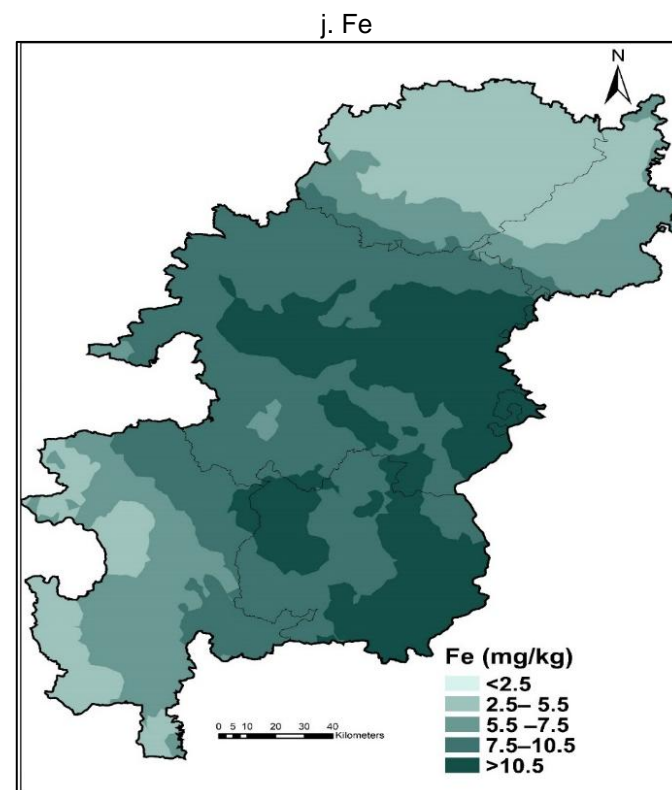
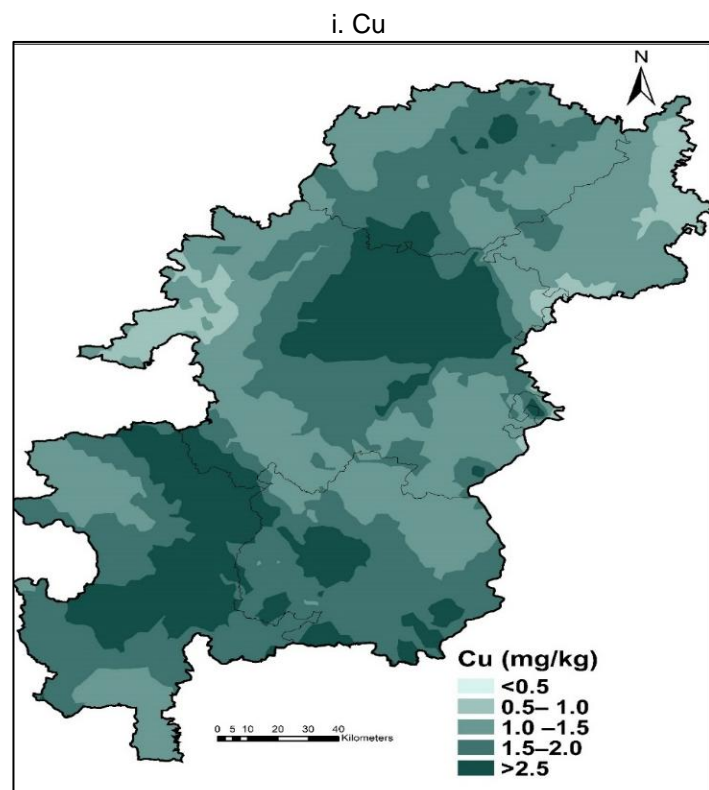


g. Available K



h. Available S





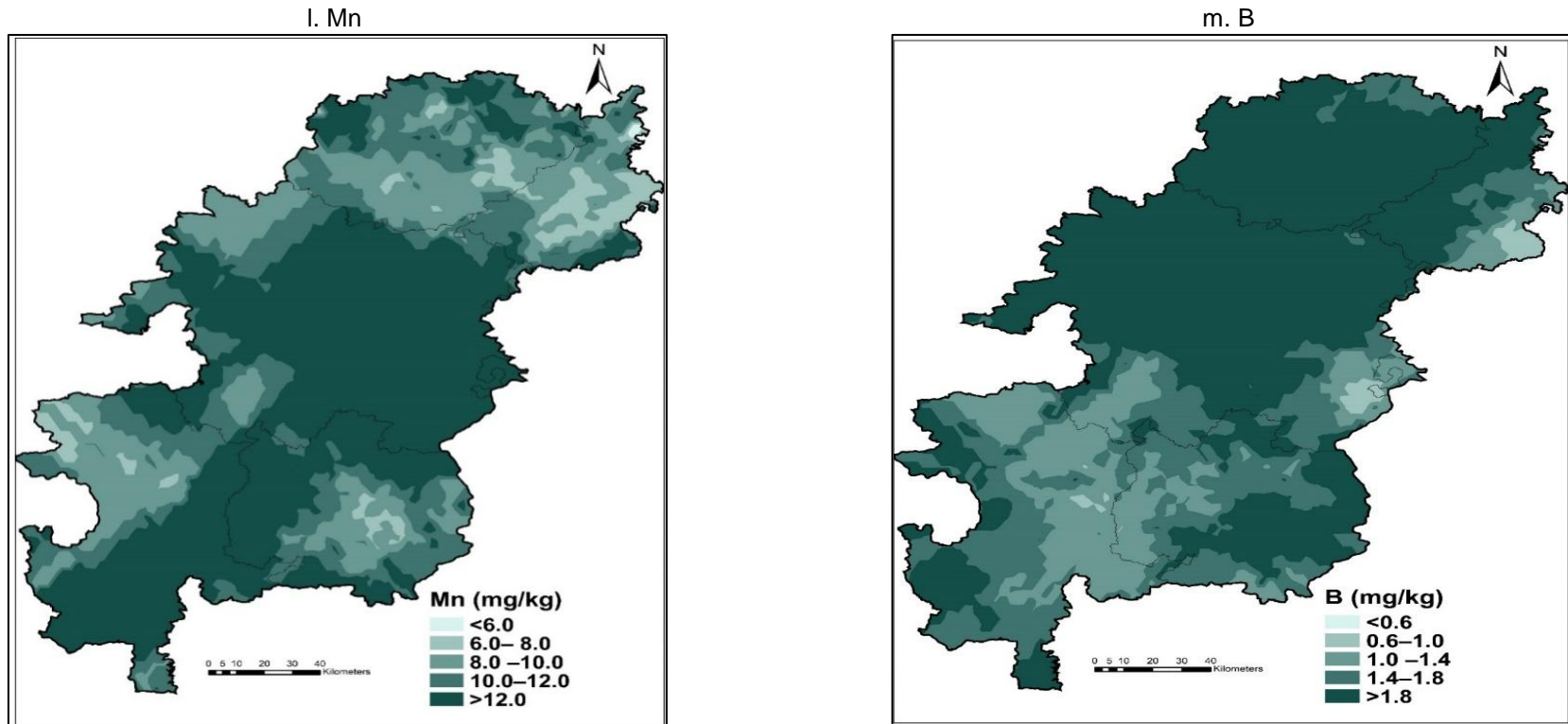
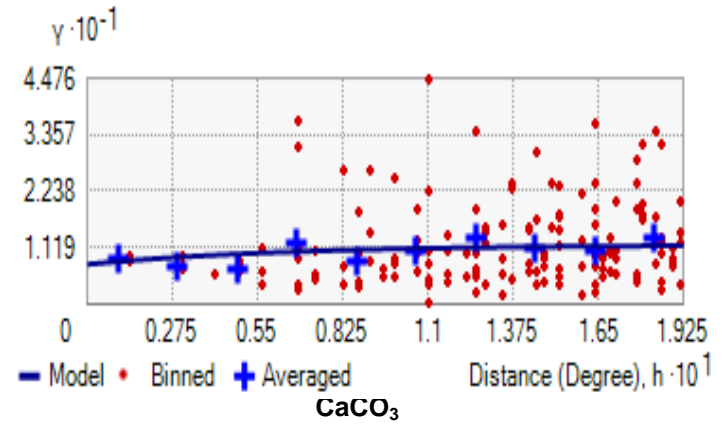
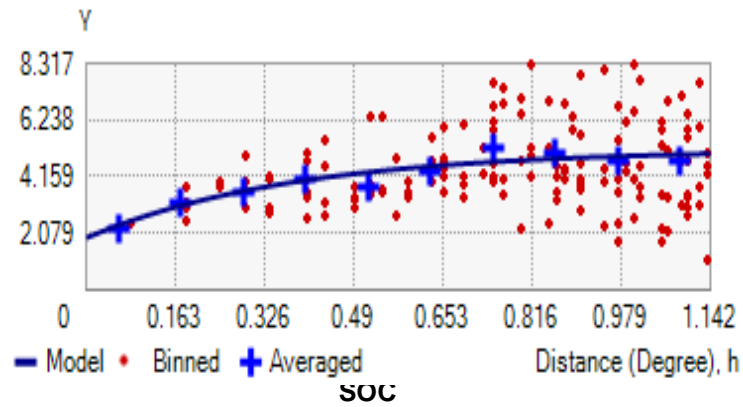
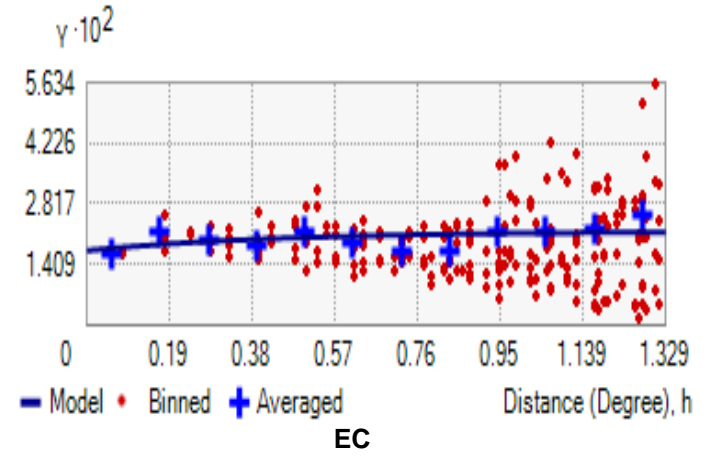
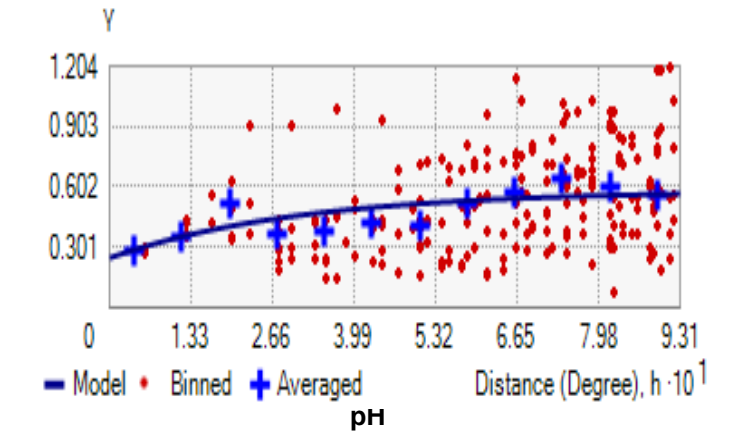
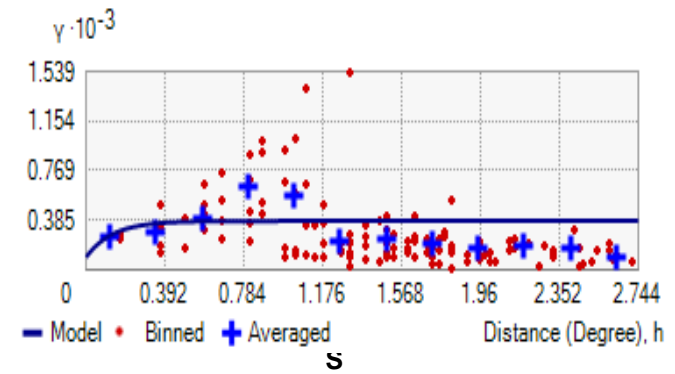
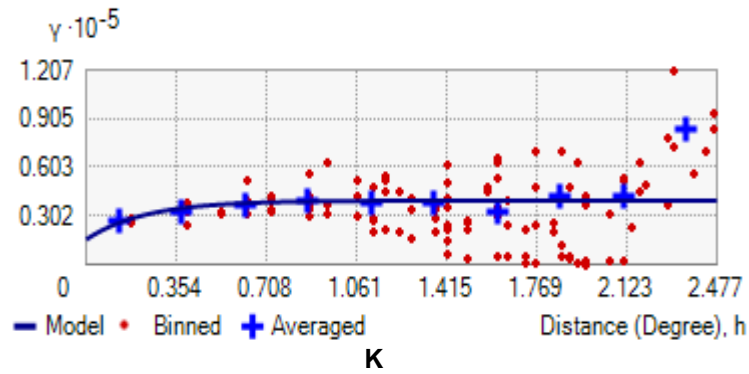
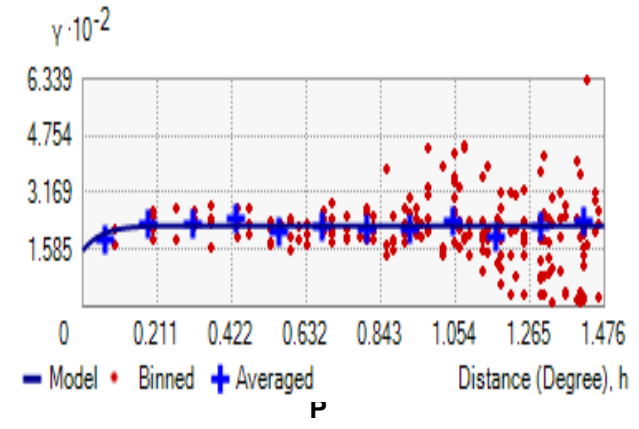
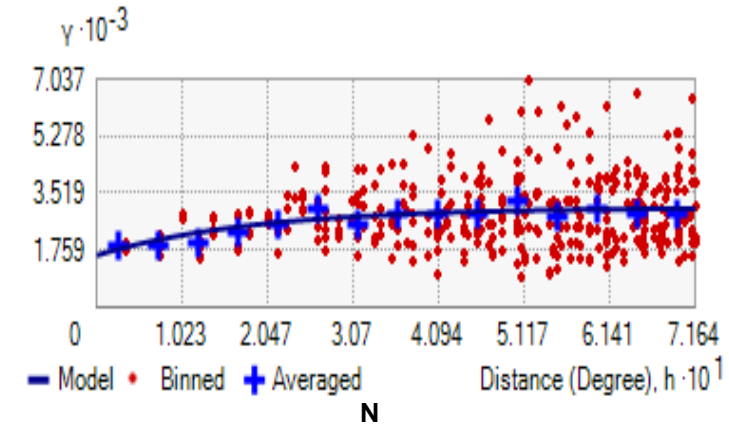
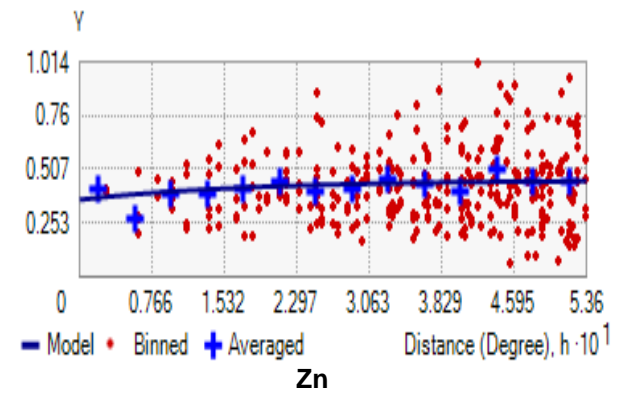
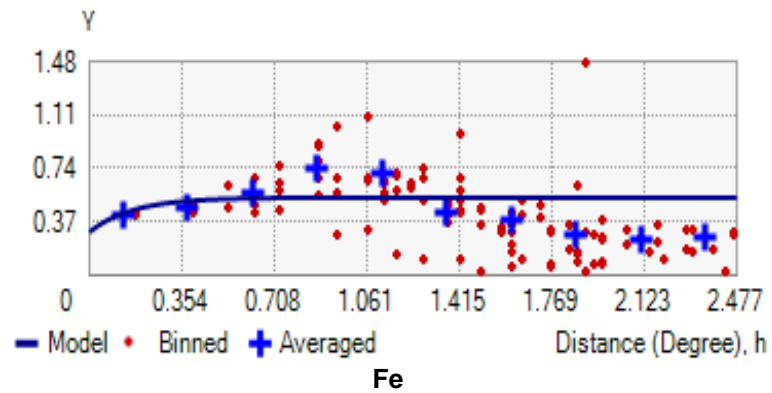
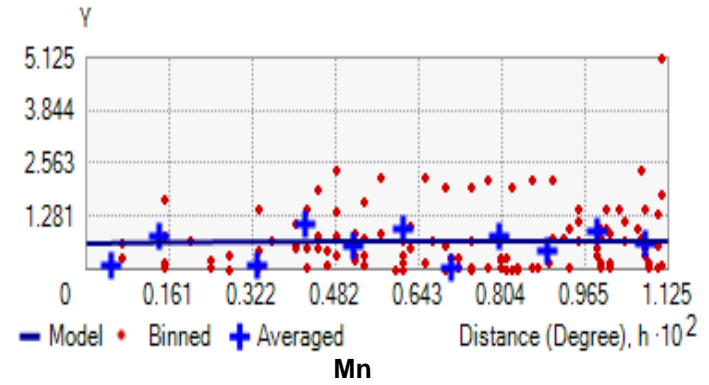
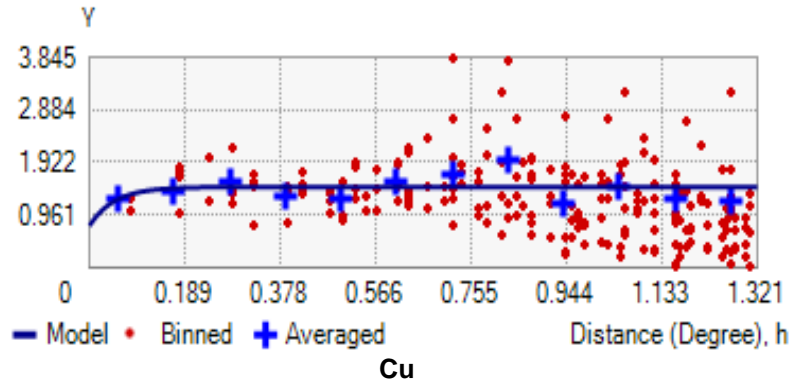


Fig. 2. Distribution maps of soil properties in the soil generated by ordinary kriging







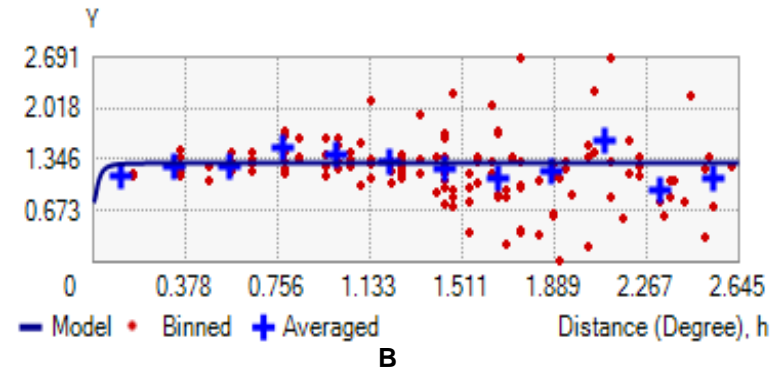


Fig. 3. Experimental semi-variograms and their fitted models' for a. pH, b. EC, c. SOC, d. CaCO₃, e. Av-N, f. Av-P, g. Av-K, h. Av-S, i. Zn, j. Cu, k. Mn, l. Fe, m. B

3.3 Pearson's' Correlation Matrix's

Current studies show that organic carbon has a major impact on soil N, P, K and S. Available P affects DTPA-Zn, Fe, Cu and Mn. Soil organic carbon and available N and K affected DTPA-Zn only, while available S affected Zn and Cu. pH and EC showed negative values for DTPA-Zn, Fe and Mn. CaCO₃ did not affect micronutrient availability. All micronutrients have been shown to be significantly and positively correlated with each other. Non-significant relation was due to narrow range of data (Table 3).

3.4 Principal Component Analysis

The 13 soils characteristics that were taken into consideration for this research all have a strong link with one another. To aggregate and summarize the variability across the 13 variables, a principal component analysis (PCA) was carried out. The principal components that yielded eigenvalues more than 1 and a cumulative contribution rate greater than 60% were kept. Table 4 displays the various maps for the five different PCs. The eigenvalues for these five PCs are PC 1, showing that one PC explains more variation than one characteristic. pH, EC, AK, and AP dominated principal component 1 (PC 1), which explained 19.544 percent of the overall variation (Table 4). The second main component, often known as PC 2, is responsible for explaining an extra 16.844% of the overall variance, whereas the SOC is the most important component. Copper was the third principal component (PC 3), which was responsible for explaining an extra 10.413%, PC-4 (9.568) and PC-5 (7.839) of the overall variation. In conclusion, the principal component analysis takes the 13 variables and combines them into five main components. These principal components account for most of the overall geographic variability in these attributes.

Multivariate techniques, such as principal component analysis and cluster analysis, have been applied to identify patterns in soil properties and their relationship to crop yield [74-77]. These techniques have shown that soil pH and nutrient levels are important predictors of crop yield in these regions. In conclusion, studies on the spatial variability of soil properties in study area have highlighted the importance of site-specific management practices based on the fertility of

tropical soils. Machine learning techniques, fuzzy logic, and multivariate techniques have been applied to identify spatial variability in soil properties and optimize management practices to increase agricultural productivity in these regions.

3.5 Clustering Analysis for Delineating Management Zones

The principal component (PC) scores for the first three PCs were imported into FuzME management zone analysis software to classify the three PCs into MZs, where a c-method fuzzy clustering algorithm was performed. The IPT and NCE values are plotted against the number of classes in Fig. 3. The optimal number of clusters is determined when each index represents at least the smallest membership share (CCT) or largest organizational size (NCE) as a result of the clustering process. Clustering the two computers produces the best sum of the three cluster classes. The resulting MZ map is shown in Fig. 3. Analysis of variance was performed to evaluate whether using a combination of PCA and fuzzy clustering algorithms to determine MZ could effectively characterize the spatial variability of soil properties. The heterogeneity of soil chemical properties among different MZs is evident from the analysis (Table 2). Regarding pH, EC, Fe, Zn and Mn there were significant and significant differences (Pb 0.05) between the three MZs. For AK, AP and AN, significant differences were recorded between MZ 1 and MZ 3. The created MZ can be an important and user-friendly rice field management information base for location specific nutrient management in the study area that farmers only use their traditional knowledge in growing rice. For example, MZ 3 has the lowest AP level, so increasing the application rate of phosphorus fertilizer will increase rice productivity. However, given the small-scale and temporal variability, soil-based static MZ may not be sufficient to apply variable fertilization, especially for nitrogen [78]. Combining MZ delineation with real-time remote sensing data during the harvest season may be a better method for site-specific N management [79]. Further studies are needed to determine the MZs based on the temporal variation or stability of soil properties and to evaluate the growing conditions of plants in the field by evaluating the cultivation pattern and calendar of the study area.

Table 3. Correlation coefficient in fertility parameters of study area

Parameters	pH	EC	OC	CaCO ₃	N	P	K	S	Cu	Zn	Fe	Mn	B
pH	1.000												
EC	0.270**	1.000											
OC	-0.055	-0.028	1.000										
CaCO ₃	0.211**	-0.160*	0.104	1.000									
N	0.076	0.171*	0.832**	0.085	1.000								
P	0.242**	0.068	-0.059	0.151	0.006	1.000							
K	0.242**	0.131	0.464**	0.211**	0.388**	0.070	1.000						
S	0.005	0.052	-0.082	-0.132	-0.053	-0.060	-0.153	1.000					
Cu	-0.021	-0.101	0.131	-0.070	0.195*	-0.193*	0.101	0.169*	1.000				
Zn	-0.099	0.098	0.263**	0.013	0.207**	-0.197*	0.119	-0.026	0.215**	1.000			
Fe	-0.479**	-0.252**	0.261**	-0.164*	0.199*	-0.170*	-0.016	0.053	0.374**	0.219**	1.000		
Mn	-0.247**	0.024	0.032	-0.090	0.020	-0.161*	0.006	0.096	0.148	0.266**	0.238**	1.000	
B	0.004	0.053	0.104	0.124	0.126	0.040	0.074	0.256**	0.027	0.039	0.005	-0.106	1.000

** Correlation is significant at the 0.01 level (2-tailed). * Correlation is significant at the 0.05 level (2-tailed)

Table 4. Principal Component analysis of the division

Principal Components	PC1	PC2	PC3	PC4	PC5
Total	2.541	2.190	1.354	1.244	1.019
% of Variance	19.544	16.844	10.413	9.568	7.839
Cumulative %	19.544	36.387	46.801	56.369	64.208
pH	-0.229	0.685	0.265	-0.094	0.282
EC	-0.027	0.348	0.605	-0.510	-0.175
OC	0.817	0.339	-0.143	0.053	-0.257
CaCO ₃	0.021	0.449	-0.339	0.340	0.581
N	0.765	0.419	0.029	-0.001	-0.287
P	-0.261	0.442	-0.092	0.157	-0.148
K	0.465	0.562	-0.063	-0.091	0.139
S	-0.005	-0.223	0.696	0.410	0.025
Cu	0.478	-0.252	0.216	0.152	0.325
Zn	0.529	-0.116	0.148	-0.289	0.378
Fe	0.574	-0.528	-0.158	0.177	-0.140
Mn	0.308	-0.406	0.130	-0.343	0.334
B	0.135	0.164	0.416	0.632	-0.035

3.6 Management Zones Developed Based on Soil Fertility

To evaluate the effectiveness of using a combination of PCA and fuzzy clustering algorithms to characterize the spatial variation of soil nutrient properties to define MZ, a t-test was performed. This analysis shows that the three MZs created are very different from each other, as other researchers have also noted [80, 16, 17]. Analysis of variance showed statistically significant differences between the three MZs for each property. The reason for the low AN content in zone 1 can be attributed to continuous rice cultivation without the addition of chemical fertilizers. Areas exposed to seawater absorption through small banks during high tides can fertilize the soil with potassium, so potassium deficiency is less common in the study area. Because rice straw is used as animal feed and fuel and to build shelter huts, little or no straw is incorporated into the soil, resulting in a low organic carbon content in 2 and 3. Zone 1 can be seen as an area that is less affected by soil salinity because seawater intrusion is less than zones 2 and 3 which are surrounded by estuaries and mangroves and are affected by sea salt during high tides. DTPA extractable Fe in all study areas was found to be above the critical upper limit required for rice cultivation. Similarly, the soil content of Zn, Mn and Cu was sufficient to support rice cultivation in the three zones, although the variability of these micronutrients was high across the three zones. Time and related yields must be classified to delineate the different soil management zones. Therefore, future research can rely on spatial data sources such as yield data, crop condition or satellite-derived NDVI data, soil properties and soil characteristics over several years.

Machine learning techniques, such as artificial neural networks and decision trees [63, 64], have been applied to identify the factors that contribute to spatial variability in soil properties. These techniques have shown that factors such as elevation, slope, and soil texture are important predictors of soil fertility in these regions [61,81]. Fuzzy logic has also been used to group soil samples based on their similarity in terms of soil properties. This approach has been used to identify areas with similar soil fertility levels and tailor management practices accordingly.

4. CONCLUSION

In this study, spatial variations of selected soil properties indicating soil fertility were quantified

using geostatistical tools and aggregated into three management zones through principal component analysis and C-method fuzzy clustering algorithms. The soil fertility indicators measured in this case study indicate that low nitrogen availability appears to be the main constraint for sustainable rice production. Therefore, nitrogen management in this area is very important to increase rice production. Differentiation into three management zones can be very useful for farmers to apply site-specific nutrient management, which meets the criteria of a simple, functional, easy to understand and economically viable management zone. The average soil nutrient value in each zone can be used as a reference for variable rate fertilization. Complex field assessments and fertilizer recommendations may not be justified in terms of time, benefits or economy. Thus, cluster analysis will reduce within-zone variability, providing the opportunity to identify on-site management zones and perhaps apply site-specific management to maximize agricultural production across the area. Knowledge of these management zones can reduce the amount of soil analysis needed to create application maps for a particular aquaculture operation.

Soils in Gwalior Division were found to be neutral to alkaline reaction, safe in electrical conductivity, low to moderate organic carbon, non-calcareous in nature, the amount of N deficiency in the soil sample was 66.36% and the amount of excess Cu, Ba, Mn, and B in the soil samples are 92.73, 100 and 69.09%, respectively.

HIGHLIGHTS

- I. Study of spatial variability in the soil fertility using geostatistical approach of the division.
- II. Differentiation into management zones may be very useful for farmers to adopt site-specific nutrient management, which satisfies the criteria of management zones to be simple, functional, easy to understand and economically feasible.
- III. Complex field assessments and fertilizer recommendations may not be justifiable in terms of time, benefit, or economics.
- IV. Fertility maps are indicated of site-specific nutrient status and is justified site specific nutrient management.

ACKNOWLEDGEMENT

The authors are grateful to the RVSKVV, Gwalior (M.P.), for sponsoring the research work. The

authors are also thankful to the Vice Chancellor, for providing the necessary facilities, Dr. Y. P. Singh (Director of Extension Service) as well as my advisory committee, RVSKVV, for their support and critical suggestions.

COMPETING INTERESTS

Authors have declared that no competing interests exist.

REFERENCES

1. Long XH, Zhao J, Liu ZP, Rengel Z, Liu L, Shao HB et al. Applying geostatistics to determine the soil quality improvement by Jerusalem artichoke in coastal saline zone. *Ecol Eng.* 2014;70:319-26. DOI: 10.1016/j.ecoleng.2014.06.024.
2. Cambule AH, Rossiter DG, Stoorvogel JJ, Smaling EMA. Soil organic carbon stocks in the Limpopo national park, Mozambique amount, spatial distribution and uncertainty. *Geoderma.* 2014;213:46-56. DOI: 10.1016/j.geoderma.2013.07.015.
3. Dos Santos CRC, Matsunaga AT, Costa LRR, Santos MLD, Brasil Neto AB, Rodrigues RP et al. Spatial variability of soil fertility under agroforestry system and native forest in eastern Amazonia, Brazil. *Biosci J.* 2023;39:e39015.
4. Weindorf DC, Zhu Y. Spatial variability of soil properties at Capulin Volcano, New Mexico, USA: implications for sampling strategy. *Pedosphere.* 2010;20(2):185-97. DOI: 10.1016/S1002-0160(10)60006-9.
5. Cao C, Jiang S, Zhang Y, Zhang F, Han X. Spatial variability of soil nutrients and microbiological properties after the establishment of leguminous shrub *Caragana microphylla* Lam. plantation on sand dune in the horqin sandy land of northeast China. *Ecol Engneering.* 2011;37:1467-75.
6. Liu ZP, Shao MA, Wang YQ. Spatial patterns of soil total nitrogen and soil total phosphorus across the entire Loess Plateau region of China. *Geoderma.* 2013;197-198:67-78. DOI: 10.1016/j.geoderma.2012.12.011.
7. Franzen DW, Hopkins DH, Sweeney MD, Ulmer MK, Halvorson AD. Evaluation of soil survey scale for zone development of site-specific nitrogen management. *J Agron.* 2002;94(2):381-9. DOI: 10.2134/agronj2002.3810.
8. Li XF, Chen ZB, Chen HB, Chen ZQ. Spatial distribution of soil nutrients and their response to land use in eroded area of South China. *Procedia Environmental Sciences. Proceedings of the environmental science.* 2011;10:14-9. DOI: 10.1016/j.proenv.2011.09.004.
9. Andrews SS, Mitchell JP, Mancinelli R, Karlen DL, Hartz TK. On- farm assessment of soil quality in California's central Valley. *Agron J.* 2002;94:12-23.
10. Maniyunda LM, Raji BA, Gwari MG. Variability of some soil physicochemical properties on Lithosequence in Funtua, North-Western, Nigeria. *Int J Sci Res (IJSR), India;* 2013. ISSN: 2319-7064.
11. Jha P, Mohapatra KP. Developing a soil quality index for ravinous ustifluvents of the semi-arid region of India. *J Indian Soc Soil Sci.* 2012;60(2):116-24.
12. Cambardella CA, Moorman TB, Novak JM, Parkin TB, Karlen DL, Turco RF et al. Field-scale variability of soil properties in central Iowa soils. *Soil Sci Soc Am J.* 1994;58(5):1501-11. DOI:10.2136/sssaj1994.03615995005800050033x.
13. Rosemary F, Vitharana UWA, Indraratne SP, Weerasooriya R, Mishra U. Exploring the spatial variability of soil properties in an alfisol soil catena. *CATENA.* 2017;150:53-61. DOI: 10.1016/j.catena.2016.10.017.
14. Jalali M. Salinization of groundwater in arid and semi-arid zones: an example from Tajarak, western Iran. *Environ Geol.* 2007;52(6):1133-49. DOI: 10.1007/s00254-006-0551-3.
15. Aaron RS, John FS, Mark AL, James SS, Sven HJ, Ariovaldo LJ. Appropriateness of management zones for characterizing spatial variability of soil properties and irrigated corn yields across years. *Agron J.* 2004;96:195-203.
16. Davatgar N, Neishabouri MR, Sepaskhah AR. Delineation of site specific nutrient management zones for a paddy cultivated area based on soil fertility using fuzzy clustering. *Geoderma.* 2012;173-174:111-8.
17. Xin-Zhong W, Guo-Shun L, Hong-Chao H, Zhen-Hai W, Qing-Hua L, Xu-Feng L et al. Determination of management zones for a tobacco field based on soil fertility. *Comput Electron Agric.* 2009;65(2):168-75. DOI: 10.1016/j.compag.2008.08.008.

18. Walkley A, Black CA. An examination of degt-jeff method for determination soil organic matter and proposal for modification of the chromic acid titration method. *Soil Sci.* 1934;37: 29-38.
19. Jackson ML. *Soil chemical analysis.* Prentice hall of India Private Limited New Delhi. 1973;498.
20. Bray RH, Kurtz LT. Determination of total, organic and available forms of phosphorus in soils. *Soil Sci.* 1945;59(1):39-46. DOI: 10.1097/00010694-194501000-00006.
21. Black CA. *Methods of soil analysis. Part 2, Chemical and microbiological properties Agron. Mono. Vol. 9.* Madison, WI: American Society of Agronomy; 1965.
22. Chesnin L, Yien CH. Turbidimetric determination of available sulphates. *Soil Sci Soc America.* 1951;15:149-51.
23. Lindsay WL, Norvell WA. Development of a DTPA soil test for Zn, Fe, Mn and Cu. *Soil Sci Soc Am J.* 1978;42(3):421-8. DOI: 10.2136/sssaj1978.03615995004200030009x.
24. Berger KC, Truog E. Boron determination in soils and plants. *Ind Eng Chem Anal Ed.* 1939;11(10):540-5. DOI: 10.1021/ac50138a007.
25. Webster R, Oliver M. Accuracy assessment and comparative analysis of IDW, spline and kriging in spatial interpolation of landform (topography): an experimental study. *Geostatistics for environmental scientists.* Chichester: John Wiley & Sons, Ltd. 2001;271.
26. Goovaerts P. Geostatistical tools for characterizing the spatial variability of microbiological and physico-chemical soil properties. *Biol Fertil Soils.* 1998; 27(4):315-34. DOI: 10.1007/s003740050439.
27. Schepers AR, Shanahan JF, Liebig MA, Schepers JS, Johnson SH, Luchiari Jr A. Appropriateness of management zones for characterizing spatial variability of soil properties and irrigated corn yields across years. *Agron J.* 2004;96(1):195-203. DOI: 10.2134/agronj2004.1950.
28. Davis BM. Uses and abuses of cross-validation in geostatistics. *Math Geol.* 1987;19(3):241-8. DOI: 10.1007/BF00897749.
29. Voltz M, Webster R. A comparison of kriging, cubic splines and classification for predicting soil properties from sample information. *J Soil Sci.* 1990;41(3):473-90. DOI: 10.1111/j.1365-2389.1990.tb00080.x.
30. Brown DG. Classification and boundary vagueness in mapping resettlements forest types. *Int J Geogr Inf Sci.* 1998;12(2):105-29. DOI: 10.1080/136588198241914.
31. De Gruijter JJ, Walvoort DJJ, van Gams PFM. Continuous soil maps — a fuzzy set approach to bridge the gap between aggregation levels of process and distribution models. *Geoderma.* 1997;77(2-4, June):169-95. DOI: 10.1016/S0016-7061(97)00021-9.
32. Minasny B, Mc Bratney AB. *FuzME. Version 3.0.* Australian Centre for Precision Agriculture. NSW: University of Sydney; 2006.
33. McBratney A, Moore A. Application of fuzzy sets to climatic classification. *Agric Forest Amagement.* 1985;35(1-4, October):165-85. DOI: 10.1016/0168-1923(85)90082-6.
34. Balpande SS, Deshpande SB, Pal DK. Factors and processes of soil degradation in vertisols of the Purna Valley, Maharashtra, India. *Land Degrad Dev.* 1996;7(4):313-24. DOI: 10.1002/(SICI)1099-145X(199612)7:4<313::AID-LDR236>3.0.CO;2-#.
35. Shilpa B, Rathod PK, Rathod SD, Yewale AC. Nutrients status and their interrelationship with total and available nutrient were investigated in forty-five soil samples representing fourteen profiles from five districts (Typic Haplusterts) of Central and Western Vidarbha region of Maharashtra. *Asian J Biol Sci.* 2007;2:102-9.
36. Singh SK, Kumar M, Sharma BK. Change in soil properties in hot arid region of India. *J Indian Soc Soil Sci.* 2009;57:24-30.
37. Sharma SK, Panwar P, Tomar S, Singh VP. Soil fertility evaluation of Nignoti village of Indore district. *The Ecoscan.* 2015;7:167-76.
38. Yadav TC, Rai HK, Tagore GS, Chaubey D, Dhakad R. Assessment of spatial variability in physico-chemical properties of soils in Alirajpur district of Madhya Pradesh using Geo-statistical approach. *J Soil Water Conserv.* 2018;17(4):317-24. DOI: 10.5958/2455-7145.2018.00049.8.
39. Singh YV, Kant S, Singh SK, Sharma PK, Jat LK, Kuamr M et al. Assessment of

- physico-chemical characteristics of the soil of Lahar block in Bhind districts of Madhya Pradesh (India). *Int. J Curre. Microbiol. App. sci.* 2017;6(2):511-9.
40. Srinivasarao Ch, Venkateswarlu B, Lal R, Singh AK, Kundu S, Vittal KPR et al. Long term manuring and fertilizer effects on depletion of soil organic carbon stocks under pearl millet- cluster bean – castor rotation in western India. *Land Degrad Dev.* 2014;25(2):173-83. DOI: 10.1002/ldr.1158.
 41. Mandloi S. Soil Nutrient Status and its Spatial Variability under Major Cropping Systems of Harda district using Remote Sensing and GIS Techniques [M.Sc. thesis]. Jabalpur: JNKVV; 2015. DOI: 10.13140/RG.2.2.16454.01609.
 42. Nazif W, Perveen S, Saleem I. Status of micronutrients in soils of district bhimber (Azad Jammu and Kashmir). *J Agric Biol Sci.* 2006;1:35-40.
 43. Sharma PD. Nutrient management challenges and options. *J Indian Soc Soil Sci.* 2008;33:672-5.
 44. Kumar M, Kar A, Raina P, Singh SK, Moharna PC, Chauhan JS. Spatial variability of available soil nutrients in the Shekhawati Region of Thar desrts, India. *J Indian Society Soil Sci.* 2019;67(1):21-33. DOI: 10.5958/0974-0228.2019.00003.3.
 45. Verma LP, Tripathi BR, Sharma OP. Notes on organic carbon as index to assess the nitrogen status of the soil. *J Indian Soc Soil Sci.* 1980;28:247-52.
 46. Meena HB, Sharma RP, Rawat US. Status of Macro and Micronutrients in some soils of Tonk District of Rajasthan. *J Indian Soc Soil Sci.* 2006;54:508-12.
 47. Ashok Kumar S. Studies on soil aggregation in vertisols of North Karnataka. M & Sc (Agri.) [thesis]. Karnataka, India: University of Agricultural Sciences, Dharwad; 2000.
 48. Subhash TGS, Nath Debabrata MM, Sinha NK. Evaluation of variation in macronutrients of soils in Harda District, Madhya Pradesh, India - A geostatistical approach. 2017; Article no. AIR.35391;1(5):1-13.
 49. Kumar A, Mishra VN, Srivastav LK, Banwasi R. Evaluation of soil fertility status of available major nutrients (N, P & K) and micro nutrient (Fe, Mn, Cu & Zn) in vertisol of Kabeerdham district of Chhattisgarh, India. *Int J Interdiscip Multidiscip Stud.* 2014;10:72-9.
 50. Kori S, Singh SK, Morya R, Subhash. Distribution and spatial variability of some physico-chemical properties and various forms of potassium in soils of Ashoknagar District of Madhya Pradesh, India. *Int J Curr Microbiol App Sci.* 2020;9(7):362-73.
 51. Ravikumar P, Somashekar RK. Spatial distribution of macronutrients in soils of Markandeya River basin, Belgaum, Karnataka, India. *Proceedings of the International Academy of Ecology and Environmental Science.* 2014;4(2):81-94.
 52. Singh B. Physico-chemical properties and fertility status of irrigated soil of Neemrana Panchayat samiti of Alwar district. *Agriculturists.* Available from: M.sc [thesis]. Bikaner: Swami Keshwanand Rajasthan Agricultural University; 2010.
 53. Jena D, Mohanty B, Nayak SC. Distribution of available sulfur, zinc, copper, iron, manganese and boron in deltaic alluvial soil (Ustipsamment) in relation to certain soil properties. *Environ Ecol.* 2008;25:730-3.
 54. Mathur GM, Ramdev, Yadav BS. Status of zinc in irrigated North-West plain soils of Rajasthan. *J Indian Soc Soil Sci.* 2006;54:359-61.
 55. Gupta S. *Rereading harry.* Potter: Springer; 2003 May 30.
 56. Thakre YG, Choudhary MD and Raut RD. *J Chem Pharm Res.* 2013. Available micronutrient cation status of red soils in Wardha region, India;5(8):64-8.
 57. Noor YS, Shah Z. Spatial variability of micronutrients in citrus orchard of north western Pakistan. *Sarhad J Agric.* 2013;29(3).
 58. Zhang YG, Zhang YY, Cai JP, Zhu P, Gao HJ, Jiang Y. Variation in available micronutrients in black soil after 30-year fertilization treatment. *Plant Soil Environ.* 2014;60(9):387-93. DOI: 10.17221/68/2014-PSE.
 59. Subhash GS, Tagore PS, Kulhare and A.K. Shukla. *Mapp Spat Pattern Micronutrients Soils Harda Dist of Madhya Pradesh through Geo-statistical Tool in Arc GIS Environment.* *Int.J.Curr.Microbiol.App.Sci.* 2019;8(2):52-63.
 60. Olivares BO, Vega A, Calderón MAR, Rey JC, Lobo D, Gómez JA et al. Identification of soil properties associated with the incidence of banana wilt using supervised

- methods. *Plants* (Basel). 2022;11(15):2070.
DOI: 10.3390/plants11152070
61. Olivares B, Hernández R. Ecoterritorial sectorization for the sustainable agricultural production of potato (*Solanum tuberosum* L.) in Carabobo, Venezuela. *Agric Sci Technol*. 2019;20(2):339-54.
DOI: 10.21930/rcta.vol20_num2_art:1462.
62. Orlando B, Hernández R. Application of multivariate techniques in the agricultural land's aptitude in Carabobo, Venezuela. *Trop Subtrop Agroecosystems*. 2020;23(2):1-12.
63. Olivares BO, Araya-Alman M, Acevedo-Opazo C, Rey JC, Cañete-Salinas P, Kurina FG et al. Relationship between soil properties and banana productivity in the two main cultivation areas in Venezuela. *J Soil Sci Plant Nutr*. 2020;20(4):2512-24.
DOI: 10.1007/s42729-020-00317-8.
64. Olivares B, Lobo D, Rey JC, Vega A, Rueda-Calderón A. Relationships between the Visual Evaluation of Soil Structure (VESS) and soil properties in agriculture: A meta-analysis. *Sci Agropec*. 2023;14-1:67-78.
DOI: 10.17268/sci.agropecu.2023.007.
65. Olivares BO, Rey JC, Perichi G, Lobo D. Relationship of microbial activity with soil properties in banana plantations in Venezuela. *Sustainability*. 2022;14(20):13531.
DOI: 10.3390/su142013531.
66. Cortez A, Olivares B, Parra R, Lobo D, Rodríguez MF, Rey JC. Descripción de los eventos de sequía meteorológica en localidades de la cordillera central, Venezuela. *Cienc Ingenierías Apl*. 2018;22-44:1 (1).
DOI: 10.22206/cyap.2018.v1i1.pp23-45.
67. Jiang H, Hou-Long L, Guo-Shun L, Shu-Duan L, Wang R, Yang Y et al., En-Hua. Delineation of site-specific management zones based on soil properties for a hillside field in central China. *Arch Agron Soil Sci*, Yong-Feng, Hu, Hong-Chao. 2012;58(10):1075-90.
DOI: 10.1080/03650340.2011.570337.
68. López-Granados F, Jurado-Expósito M, Atenciano S, García-Ferrer A, Sánchez de la Orden M, García-Torres L. Spatial variability of agricultural soil parameters in southern Spain. *Plant Soil*. 2002;246(1):97-105.
DOI: 10.1023/A:1021568415380.
69. Amirinejad AA, Kamble K, Aggarwal P, Chakraborty D, Pradhan S, Mittal RB. Assessment and mapping of spatial variation of soil physical health in a farm. *Geoderma*. 2011;160(3-4):292-303.
DOI: 10.1016/j.geoderma.2010.09.021.
70. Olivares BO, Calero J, Rey JC, Lobo D, Landa BB, Gómez JA. Correlation of banana productivity levels and soil morphological properties using regularized optimal scaling regression. *CATENA*. 2022;208:105718.
DOI: 10.1016/j.catena.2021.105718.
71. Olivares Campos BO, Paredes F, Rey JC, Lobo D, Galvis-Causil S. The relationship between the normalized difference vegetation index, rainfall, and potential evapotranspiration in a banana plantation of Venezuela. *Sains Tanah J Soil Sci Agroclimatology*. 2021;18(1):58-64.
DOI: 10.20961/stjssa.v18i1.50379.
72. Olivares BO, Vega A, Rueda Calderón MA, Montenegro-Gracia E, Araya-Almán M, Marys E. Prediction of banana production using epidemiological parameters of black sigatoka: an application with random forest. *Sustainability*. 2022;14(21):14123.
DOI: 10.3390/su142114123.
73. Olivares B. Description of soil management in agricultural production systems in the Hamaca de Anzoátegui sector, Venezuela. *Granja Rev Cienc Vida*. 2016;23(1):14-24.
74. Olivares BO, Hernández R, Arias A, Molina JC, Pereira Y. Eco-territorial adaptability of tomato crops for sustainable agricultural production in Carabobo, Venezuela. *Idesia*. 2020;38(2):95-102.
DOI: 10.4067/S0718-34292020000200095.
75. Campos B, Pitti J, Montenegro E. Socioeconomic characterization of Bocas del Toro in Panama: an application of multivariate techniques. *Rev Bras Gestão Desenvolvimento Reg*. 2020;16(3):59-71.
76. Montenegro E, Pitti J, Olivares B. Identification of the main subsistence crops of Teribe: a case study based on multivariate techniques. *Idesia*. 2021;39(3):83-94.
DOI: 10.4067/S0718-34292021000300083.
77. Pitti J, Olivares B, Montenegro E. The role of agriculture in the Changuinola District: a case of applied economics in Panama. *Trop Subtrop Agroecosystems*. 2021;25(1):1-11.
DOI: 10.56369/tsaes.3815.

78. Ye XF, Zhang XY, Cui SY, Yu QW, Wang YY, Liu GS. Effect of different potassium application rate on the potassium contents in tobacco leaves and soil. J Henan Agric Univ. 2006;40:473-6 (in Chinese).
79. Song XY, Wang JH, Liu LY, Shen T, Yu ZZ. Research of management zones generating based on Quickbird imagery. Sci Agric Sin. 2007;40:1996-2006 (in Chinese).
80. Fridgen JJ, Kitchen NR, Sudduth KA, Drummond ST, Wiebold WJ, Fraisse CW. Management zone analyst (MZA): software for subfield management zone delineation. Agron J. 2004;96(1):100-8. DOI: 10.2134/agronj2004.1000.
81. Orlando B, Hernández R, Arias A, Molina JC, Pereira Y. Agroclimatic zoning of corn crop for sustainable agricultural production in Carabobo, Venezuela. Rev Univ Geogr. 2018;27(2):139-59.

© 2023 Yadav et al.; This is an Open Access article distributed under the terms of the Creative Commons Attribution License (<http://creativecommons.org/licenses/by/4.0>), which permits unrestricted use, distribution, and reproduction in any medium, provided the original work is properly cited.

Peer-review history:

The peer review history for this paper can be accessed here:
<https://www.sdiarticle5.com/review-history/97725>