



***Russula deodarae*: A New Species of *Russula* Sect. *Ingratae* (Russulaceae) from India Based on Morphology and Molecular Data**

Dyutiparna Chakraborty ^a and Aniket Ghosh ^{b*}

^a Eastern Regional Center, Botanical Survey of India, Shillong, India.

^b Department of Biological Sciences, St. Xavier's college, Maharo, Dumka, India.

Authors' contributions

This work was carried out in collaboration between both authors. Both authors read and approved the final manuscript.

Article Information

DOI: <https://doi.org/10.9734/ijpss/2025/v37i25313>

Open Peer Review History:

This journal follows the Advanced Open Peer Review policy. Identity of the Reviewers, Editor(s) and additional Reviewers, peer review comments, different versions of the manuscript, comments of the editors, etc are available here: <https://pr.sdiarticle5.com/review-history/131104>

Original Research Article

Received: 06/12/2024

Accepted: 08/02/2025

Published: 12/02/2025

ABSTRACT

One new species of *Russula*, namely *Russula deodarae* belonging to subg. *Heterophyllidia* sect. *Ingratae* is proposed herein based on its morphological features and nrITS-based phylogenetic inference. *Russula deodarae* is characterized by brown, light brown to dark brown pileus; chalky white, adnate, subdistant lamellae; chalky white, yellowish white to dingy stipe with blood red base; hymenial cystidia with obtuse-rounded, subcapitate, mucronate or appendiculate apex; basidiospores composed of conical warts and ridges connected to give partial to incomplete reticulum, distinctly amyloid suprahilar plage. The species was found occurring under *Cedrus deodara*-dominated coniferous forests and is widely foraged by local communities in the region for

*Corresponding author: E-mail: ghosh.aniket87@gmail.com;

its gastronomic delicacy. Detailed descriptions accompanied with colour photographs of the basidiomata, illustrations of the main anatomical features, nrITS-based molecular phylogeny and comprehensive comparisons with similar species are also provided.

Keywords: Basidiomycota; *Cedrus deodara*; nrITS; taxonomy.

1. INTRODUCTION

“The family Russulaceae harbours four predominantly agaricoid genera: *Lactifluus* Pers., *Lactarius* Pers., *Multifurca* Buyck & V. Hofst. and *Russula* Pers” (Buyck et al., 2008, 2010) and is one of the dominant and morphologically diverse ectomycorrhizal mushroom families in the Himalayas (Sharma et al., 2018, Ghosh et al., 2021, 2023a). “*Russula*, the type genus of this family, is one of the most taxonomically diverse genera of mushroom-forming fungi and the second largest genus after *Cortinarius* (Pers.) Gray” (Kalichman et al., 2020). “It is characterized by a frequently colourful pileus, a brittle context because of the presence of abundant sphaerocytes, and the presence of an amyloid spore ornamentation and gloeoplerous elements, but is devoid of a branching lactiferous system ending in pseudocystidia at the basidiome surface as in the genera *Lactarius* and *Lactifluus*” (Buyck et al., 2018). “*Russula* is by far the most speciose genus in the ectomycorrhizal family Russulaceae (Russulales, Basidiomycota), with about 2,000 species worldwide (Adamčík et al., 2019). To date, more than 183 taxa have been reported from India” (Ghosh et al., 2023b). “Major ectomycorrhizal host trees that support the growth and development of these mushrooms in India belong to genera like *Quercus* L., *Castanopsis* (D. Don) Spach, *Cedrus* Mill., *Lithocarpus* Blume, *Hopea* L., *Shorea* Roxb. ex C.F. Gaertn., *Abies* Mill., *Picea* A. Dietr., *Cedrus* Trew, *Pinus* L., *Tsuga* (Endl.) Carrière, *Larix* Mill. etc. Compared with Europe” (Romagnesi, 1985; Sarnari, 1998). Recently, Buyck et al., (2018) demonstrated that the anatomy of ectomycorrhiza added support to a new infrageneric classification system of *Russula*, which is followed here, based on a new multi-locus phylogenetic analysis.

“Species belonging to *Russula* sect. *Ingratae* (Quél.) Maire are mostly characterized by a tawny, ochraceous or ashy-grey to dark brown coloured pileus with faintly or strong tuberculate striate margin, equal lamellae that are sometimes forked or intermixed with few lamellulae, a mild to very acid taste and often unpleasant smell; white to cream coloured spore prints and basidiospores that are an amyloid or partly

amyloid suprahilar area; they have abundant gloeoplerous elements throughout their tissues and small, often mucronate, unicellular pileocystidia at the pileus surface mixed with branched, short-celled hyphal ends in the pileipellis” (Singer, 1986, Sarnari, 1998). In the recently published ITS (Li et al., 2021, Ghosh et al., 2022) and multi-gene (Buyck et al., 2018, Chen et al., 2021, Han et al., 2022, Song et al., 2018) phylogenetic analysis shows that the members of sect. *Ingratae* form a well-supported, monophyletic lineage within the subg. *Heterophyllidiae* Romagn. A total 10 species of sect. *Ingratae* have been described from India such as: *Russula abbotensis* K. Das & J. R. Sharma, *R. arunii* Paloi, A. K. Dutta & K. Acharya, *R. benghalensis* S. Paloi & K. Acharya, *R. dubdiana* K. Das, Atri & Buyck, *R. indocatillus* A. Ghosh, K. Das & R. P. Bhatt, *R. indosenecis* A. Ghosh, D. Chakr., K. Das & Buyck, *R. natarajanii* K. Das, J. R. Sharma & Atri, *R. obscuricolor* K. Das, A. Ghosh & Buyck, *R. pseudosenecis* A. Ghosh, D. Chakr., K. Das & Buyck and *R. tsokae* K. Das, Van de Putte & Buyck (Das et al., 2006, 2010, 2017, Crous et al., 2017, Ghosh et al., 2020, 2022, Yuan et al., 2019).

During extensive macrofungal surveys conducted in the Kalatop-Khajjiar Wildlife Sanctuary in Himachal Pradesh, several noteworthy species from the genus *Russula*, were collected. Detailed morphological examinations and molecular phylogenetic analyses of recent collections revealed one previously undescribed species from subg. *Heterophyllidiae*, sect. *Ingratae*. This species is introduced here as *Russula deodarae* sp. nov. Comprehensive macro- and micromorphological description of the new species is provided, supported by phylogenetic analysis based on nrITS sequences.

2. MATERIALS AND METHODS

2.1 Sampling

The survey site was located in the northwestern Indian state of Himachal Pradesh. Mushroom forays were conducted during the rainy seasons (July to October) of 2020–2022. Fruiting bodies were collected from the Kalatop-Khajjiar Wildlife

Sanctuary in Himachal Pradesh. Geographic coordinates were recorded using a Garmin e-trex30 handheld GPS receiver, and the presence of dominant host trees (*Cedrus deodara*) was documented during field collection. The collected specimens were dried using a field dryer.

2.2 Morphological Studies

“Macromorphological characterizations of the collected specimens were done from young to mature basidiomata either in the forest or in the respective basecamps. Images of the fresh basidiomata were captured with Sony DSC-RX100 and Canon Power Shot SX 50 HS. Colour codes and terms were used here mostly after the Methuen Handbook of Colour” (Kornerup & Wanscher, 1978). The methods for micromorphological characterizations and SEM work followed the protocols described by Ghosh et al., (2023b). Specimens were deposited at the ASSAM herbarium, Shillong. The subgeneric classification used in this study followed Buyck et al., (2018, 2020). Herbarium acronyms follow Thiers (<https://sweetgum.nybg.org/science/ih/>).

2.3 Molecular Studies

2.3.1 DNA extraction, PCR amplification and sequencing

The protocols for DNA extraction and sequencing of the ITS region of the nuclear ribosomal DNA (nrDNA) marker followed Ghosh et al., (2023b). The final consensus sequences were prepared using Geneious Pro v. 5.1 (Drummond et al., 2010) and deposited at GenBank to procure the accession numbers: PQ432334 and PQ432335 for *Russula deodarae* sp. nov.

2.3.2 Dataset assembly, alignment of the dataset and inferring phylogeny

To investigate the relationships of the nrITS sequences of the newly identified *Russula deodarae* (ASSAM F013 and ASSAM F014), reference sequences showing the closest matches were retrieved from GenBank (<https://www.ncbi.nlm.nih.gov/genbank/>), the UNITE database (<https://unite.ut.ee/>), as well as from relevant published phylogenies (Song et al., 2018, Adamčík et al., 2019, Yuan et al., 2019, Chen et al., 2021, Li et al., 2021, Ghosh et al., 2022). A multiple sequence alignment (MSA) of nrITS dataset was built with MAFFT ver. 7 (Katoh et al., 2019) using the L-INS-i algorithm, the 200PAM/k = 2 scoring matrix, a gap open

penalty of 1.53 and an offset value of 0.123. The alignment was manually reviewed and trimmed based on conserved motifs using MEGA v. 7 (Kumar et al., 2016). Sites with 90% gaps were removed using trimAl v.1.2 program (Capella-Gutiérrez et al., 2009). Maximum likelihood (ML) analysis was performed using IQ-tree version 2.2.2.6 (Nguyen et al., 2015), with the optimal model for the nrITS locus (TPM2u+F+I+G4) selected by ModelFinder (Kalyaanamoorthy et al., 2017) based on the Bayesian Information Criterion (BIC). Additionally, ultrafast bootstrap with 1,000 replicates was applied to obtain nodal support values. Maximum likelihood bootstrap (MLbs) values $\geq 70\%$ are shown in the phylogenetic trees (Fig. 1).

3. RESULTS AND DISCUSSION

3.1 Phylogenetic Inferences

In our ML phylogenetic analysis, the nrITS data matrix comprised of 94 taxa and 646 nucleotide sites (including gaps). The nrITS dataset contained 436 distinct patterns, 305 parsimony-informative, 64 singleton sites and 277 constant sites. The maximum likelihood (ML) tree obtained from the nrITS alignment with IQ-TREE analysis was constructed with log-likelihood of -7140.247 . The rate parameters used were as follows: A-C: 1.50178, A-G: 7.02670, A-T: 1.50178, C-G: 1.00000, C-T: 7.02670 and G-T: 1.00000; base frequencies A: 0.221 C: 0.247 G: 0.226 and T: 0.306; gamma distribution shape parameter $\alpha = 0.725$. Our nrITS based phylogenetic analysis (Fig. 1) showed that two sequences of *Russula deodarae* (GenBank [PQ432334 (Holotype), PQ432335]) were placed in subg. *Heterophyllidia* sect. *Ingratae*, where it was part of a fully supported clade (MLbs = 99%) comprising of European *Russula praetervisa* Sarnari, *R. recondita* Melera & Ostellari, American *R. amerorecondita* Avis & Barajas and *R. garyensis* Avis & Barajas. However, our Indian collections are recovered as distinct species within the phylogenetic tree (Fig. 1).

3.2 Taxonomy

Russula deodarae D. Chakr. & A. Ghosh, sp. nov.

MycoBank: MB 856121

GenBank: PQ432334 (nrITS, Holotype), PQ432335 (nrITS).

Etymology: ‘*deodarae*’ refers to *Cedrus deodara* (Pinaceae), the host tree.

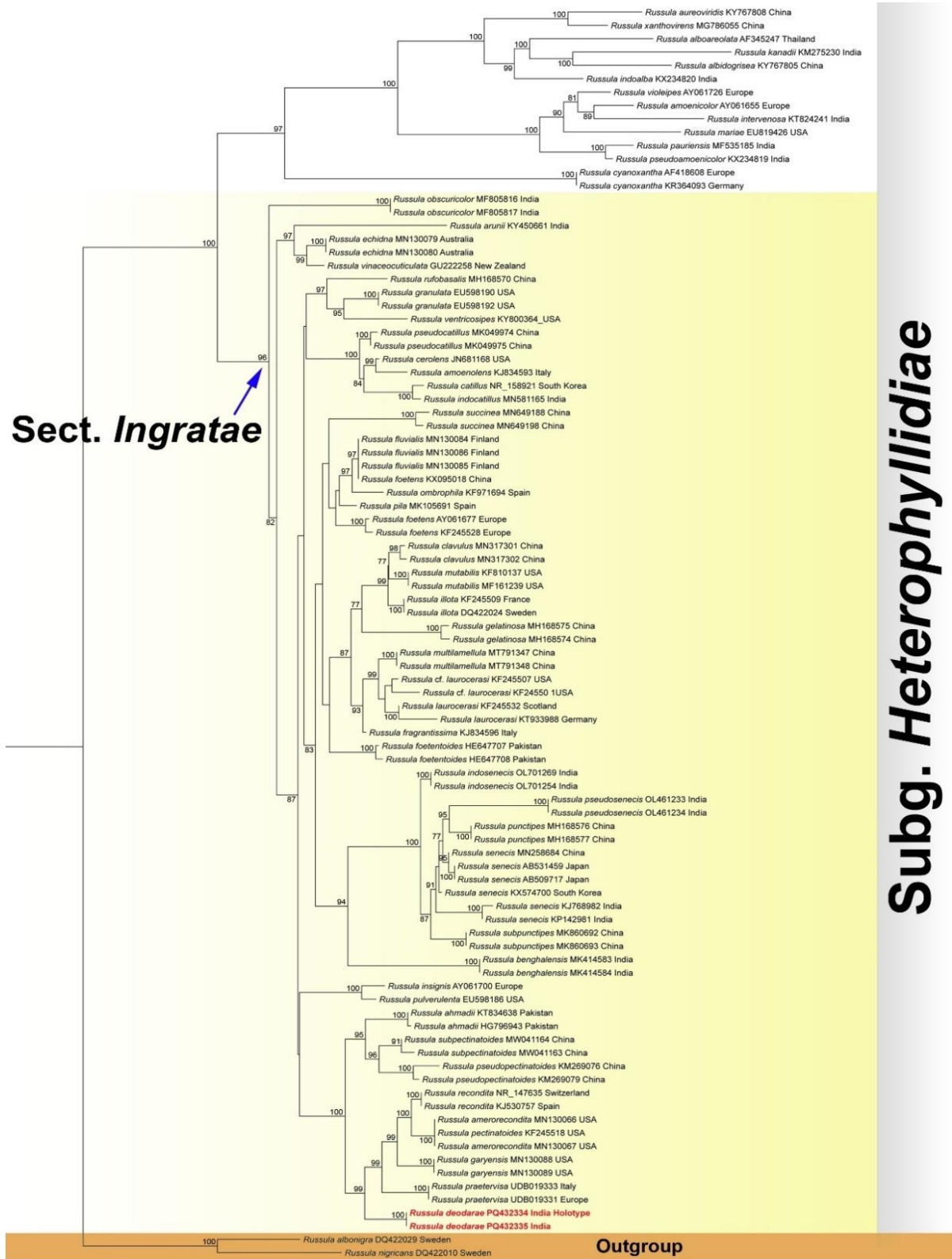


Fig. 1. Phylogram generated by means of maximum likelihood analysis based on nrITS sequence data of *Russula* spp. Maximum likelihood bootstrap support $\geq 70\%$ shown above or below the branches at nodes.



Fig. 2. *Russula deodarae* sp. nov. (a, b) fresh basidiomata *in situ*; (c, d) transverse section through pileipellis showing elements; (e) transverse section through lamellae showing hymenial cystidia near the lamellae sides and basidia; (f) SEM images of basidiospores. Scale bars: c = 100 μm; d, e = 10 μm; f = 3 μm

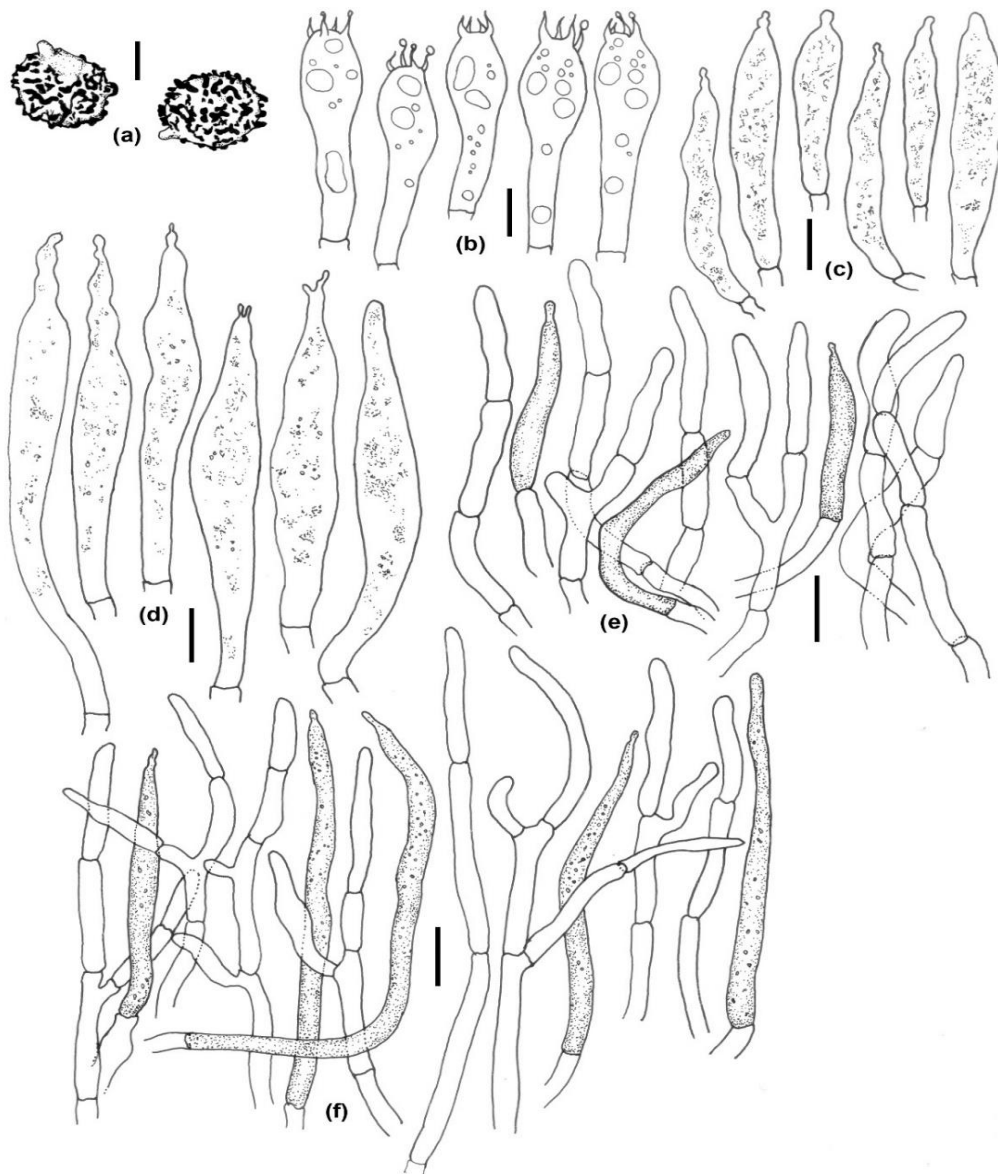


Fig. 3. Line drawings of *Russula deodarae* sp. nov. (a) Basidiospores (b) Basidia; (c) Hymenial cystidia near the lamellae edges; (d) Hymenial cystidia near the lamellae sides; (e) Elements of pileipellis: hyphal terminations and pileocystidia near the pileus margin; (f) Elements of pileipellis: hyphal terminations and pileocystidia near the pileus center. Scale bars: a = 3 μm ; b–f = 10 μm

Type: India: Himachal Pradesh, Chamba, Kalatop, 2423 m elev., N32°32.882' E76°01.143', July 22, 2021, D. Chakraborty, DC 21-74, (holotype!: ASSAM F013).

Diagnosis: *Russula deodarae* is mainly separated from closely related Indian *R. obscuricolor* K. Das, A. Ghosh & Buyck by combination of mild taste, occurrence under *Cedrus deodara*, hymenial cystidia with obtuse-rounded, subcapitate, mucronate or appendiculate apex and nrITS sequence data.

Description: Pileus medium to large sized, 32–112 mm in diam., hemispherical when young, then convex, planoconvex to applanate at maturity, broadly depressed at the center; margin incurved when young then gradually decurved to plane with age, strongly tuberculate striate; surface viscid when moist, glutinous; brown (6E4–5), light brown (6D4–5) when young, becoming orange grey (6B2), greyish brown, brown (6D–E3–4) to dark brown (6F5–7) at center then brownish grey (6C2) to orange grey (6B2) at margin with age. Lamellae adnate,

subdistant (7–10/cm at pileus margin), chalky white (1A1), unchanging or light brown (6D4–5) on maturity or injured, forked at stipe apex, middle or at margin; lamellulae less, present in 3 series. Stipe 40–85 × 12–25 mm, central, subcylindrical, subclavate to clavate with broader base; surface dry, smooth, chalky white to yellowish white (1A1–2) becoming dingy after handling, blood red at base; turning salmon pink (6A4) and deep to dark turquoise (24E–F7–8) with FeSO₄ and guaiacol respectively. Smell pleasant, slightly fruity. Taste mild. Spore print not obtained.

Basidiospores subglobose to broadly ellipsoid, (6.0–)6.4–6.8–7.2(–7.6) × (5.0–)5.3–5.7–6.1(–6.5) μm, [n=40, Q = (1.06–)1.09–1.18–1.27(–1.48)]; ornamentation amyloid, composed of somewhat conical warts and ridges connected to give partial to incomplete reticulum; warts up to 0.9 μm high, suprahilar plage inamyloid; apiculi up to 1.2 μm long. Basidia (35–)40–45(–48) × (9–)10–11(–12) μm, 4-spored, subclavate to narrowly clavate, narrow base; sterigmata up to 5 μm high. Hymenial cystidia near the lamellae sides (66–)74–84(–100) × (8.8–)9–11(–11.2) μm, cylindrical to subclavate with obtuse-rounded, subcapitate or appendiculate apices; partly or completely filled with finely crystalline content, without reacting in sulfovanillin (SV). Lamellae edges fertile with basidia and cystidia. Hymenial cystidia near the lamellae edges usually smaller and narrower, measuring (35–)38–50(–52) × (5.8–)6–8(–8.3) μm, cylindrical to subclavate with obtuse-rounded or mucronate apices; filled with finely crystalline content, without reacting in sulfovanillin (SV). Subhymenium layer up to 30 μm thick, pseudoparenchymatous. Hymenophoral trama mainly composed of large nests of sphaerocytes. Pileipellis orthochromatic in Cresyl blue, sharply delimited from the underlying sphaerocytes of the context, 380–400 μm thick, two-layered; vaguely divided in 90–120 μm thick suprapellis of relatively dense, composed of some erect or mostly decending hyphal terminations, arranged in a trichoderm and dispersed pileocystidia; subpellis 250–300 μm thick, composed of more or less dense, horizontally oriented hyphae. Hyphal terminations near the pileus margin often flexuous, thin-walled, composed of chain of 1–2 cells; terminal cells measuring (11–)15–23(–27) × (2–)2.8–3.2(–4) μm, mainly cylindrical, apically obtuse-rounded; subterminal cells cylindrical. Hyphal terminations near the pileus centre of similar structure, terminal cells slightly wider, measuring (17–)20–32(–35) × (2.8–)3–4(–4.5)

cells mainly cylindrical. Pileocystidia near the pileus margin one-celled, flexuous, thin-walled; terminal cells (42–)50–62(–75) × (4–)4–4.5(–5) μm, cylindrical, apically mostly subcapitate, obtuse-rounded or mucronate; content finely crystalline, without reacting in sulfovanillin (SV). Pileocystidia near the pileus centre one-celled, thin-walled; slightly shorter terminal cells (28–)30–40(–42) × (3.2–)3.5–4(–4.5) μm, cylindrical, apically mucronate, capitate, subcapitate; content finely crystalline, without reacting in sulfovanillin (SV). Clamp connections absent from all tissues.

Habit and habitat: Solitary or scattered, growing on soil in association with *Cedrus deodara* in temperate coniferous forest.

Additional specimen examined: India: Himachal Pradesh, Chamba, Kalatop, 2423 m elev., N32°32.882' E76°01.143', October 6, 2020, D. Chakraborty, NPFD917-07 (ASSAM F014).

Remarks: The combination of macro- and micromorphological features of the present newly described species including medium to large sized basidiomata, tuberculate-striate pileus margin, stipe with many internal cavities, mild to slightly acrid taste, basidiospores with inamyloid suprahilar plage place it undoubtedly in subg. *Heterophyllidiae* sect. *Ingratae*. This placement is well-supported by phylogenetic analysis that also positioned this new species within the same clade (MLbs = 96%) of sect. *Ingratae* (= subg. *Heterophyllidiae*) comprising of European *Russula praetervisa*, *R. recondita*, North American *R. amerorecondita* and *R. garyensis*. Considering the purplish red spots at the base of the stipe, present taxon is close to the European *R. praetervisa* and *R. recondita*. But, *R. praetervisa* is distinct in having medium sized (35–70 mm in diam.) ochre-brown pileus, taste unpleasant and sometimes bitterish and presence of slightly larger (7.0–8.5 × 5.6–7.0 μm) basidiospores (Sarnari, 1998); whereas *R. recondita* differs by possessing medium sized (35–70 mm in diam.), ochraceous, ochre honey to ochre-grey-bistre coloured pileus and slightly larger (7.0–8.5 × 5.5–7.0 μm) basidiospores (Melera et al., 2016). *Russula amerorecondita* and *R. garyensis* have yellowish pileus, slightly acrid taste occasionally associated with mycoheterotrophic orchids of the genus *Corallorhiza* (Adamčík et al., 2019).

However, the present taxon may be confused with similarly coloured species *R. obscuricolor* (reported from India), but the later is distinct by

its a pale yellowish-white tinge in pileus margin, bitterish pungent taste, association with members of Fagaceae (*Castanopsis* sp.) and hymenial cystidia mostly with capitate, rounded and mucronate apex (Das et al., 2017). Several dark-coloured species from Asia such as: *Russula catillus* H. Lee, M.S. Park & Y.W. Lim, *R. indocatillus* A. Ghosh, K. Das & R.P. Bhatt and *R. pseudocatillus* F. Yuan & Y. Song may be confused with the present taxon. However, *R. catillus* is easily distinguished by the absence of pileocystidia in the pileipellis (Lee et al., 2017). *Russula indocatillus* is distinct in having small to medium sized pileus (20–52 mm in diam.), stipe base without blood red colouration and association with *Quercus* sp. (Ghosh et al., 2020); *R. pseudocatillus* has greyish-brown pileus in the centre, towards the margin very pale yellow and larger (7–9 µm in diam.) basidiospores (Yuan et al., 2019).

4. CONCLUSION

India, with its luxuriant forests of coniferous and deciduous trees, is immensely diverse in terms of fleshy mushrooms, and the genus *Russula* is not an exception. To date, nearly 200 species of genus *Russula* have been described from Indian subcontinent. However, many of these species were misidentified based on only morphological characteristics, being confused with their European or North American counterparts. Our main focus now is to unveil the diversity of the genus *Russula* in India using both morphotaxonomy and molecular data. The present contribution with morphotaxonomy and molecular phylogeny is an initiative to uncover *Russula* species of sect. *Ingratae* in the Indian Himalayas. Moreover, the newly described present taxon (*Russula deodarae* sp. nov.) is used as culinary value for local people but several species of *R. sect. Ingratae* may cause gastrointestinal problems if not properly pre-cooked (Dai et al., 2010, Bau et al., 2014, Chen et al., 2016).

DISCLAIMER (ARTIFICIAL INTELLIGENCE)

I, Aniket Ghosh, am hereby declare that NO generative AI technologies such as Large Language Models (ChatGPT, COPILOT, etc.) and text-to-image generators have been used during writing or editing of this manuscript.

ACKNOWLEDGEMENT

The authors are grateful to the Director, Botanical Survey of India (BSI), Kolkata, Head of

Office, Eastern Regional Centre, Shillong and the Principal, St. Xavier's College, Maharo, Dumka for providing all kinds of facilities during this work. One of the authors (DC) is thankful to Science and Engineering Research Board (SERB) for providing the National Post-Doctoral Research Fellowship (File No.: PDF/2019/000917).

COMPETING INTERESTS

Authors have declared that no competing interests exist.

REFERENCES

- Adamčík, S., Looney, B., Caboň, M., Jančovičová, S., Adamčíková, K., Avis, P. G., et al. (2019). The quest for a globally comprehensible *Russula* language. *Fungal Diversity*, 99, 369–449. <https://doi.org/10.1007/s13225-019-00437-2>
- Bau, T., Bao, H. Y., & Li, Y. (2014). A revised checklist of poisonous mushrooms in China. *Mycosystema*, 33(3), 517–548.
- Buyck, B., Hofstetter, V., Eberhardt, U., Verbeken, A., & Kauff, F. (2008). Walking the thin line between *Russula* and *Lactarius*: The dilemma of *Russula* sect. *Ochricompactae*. *Fungal Diversity*, 28, 15–40.
- Buyck, B., Hofstetter, V., Verbeken, A., & Walley, R. (2010). Proposal to conserve *Lactarius* nom. Cons. (Basidiomycota) with a conserved type. *Taxon*, 59(1), 295–296. <https://doi.org/10.1002/tax.591031>
- Buyck, B., Wang, X-H., Adamčíková, K., Caboň, M., Jančovičová, S., Hofstetter, V., et al. (2020). One step closer to unravelling the origin of *Russula*: Subgenus *Glutinosae* subg. nov. *Mycosphere*, 11(1), 285–304. <https://doi.org/10.5943/mycosphere/11/1/6>
- Buyck, B., Zoller, S., & Hofstetter, V. (2018). Walking the thin line... ten years later: The dilemma of above- versus below-ground features to support phylogenies in the *Russulaceae* (Basidiomycota). *Fungal Diversity*, 89(1), 267–292. <https://doi.org/10.1007/s13225-018-0397-5>
- Capella-Gutierrez, S., Silla-Martinez, J. M., & Gabaldon, T. (2009). trimAl: A tool for automated alignment trimming in large-scale phylogenetic analyses. *Bioinformatics*, 25, 1972–1973. <https://doi.org/10.1093/bioinformatics/btp348>

- Chen, B., Song, J., Zhang, J.-H., & Liang, J.-F. (2021). Morphology and molecular phylogeny reveal two new species in *Russula* sect. *Ingratae* from China. *Phytotaxa*, 525(2), 109–123. <https://doi.org/10.11646/phytotaxa.525.2.2>
- Chen, Z. H., Yang, Z. L., Bau, T., & Li, T. H. (2016). Poisonous mushrooms: Recognition and poisoning treatment. Beijing: Science Press.
- Crous, P. W., Wingfield, M. J., Burgess, T. I., Hardy, G. E. St. J., Barber, P. A., Alvarado, P., et al. (2017). Fungal Planet description sheets: 558–624. *Persoonia*, 38, 240–384. <https://doi.org/10.3767/003158517X698941>
- Dai, Y. C., Zhou, L. W., Yang, Z. L., Wen, H. A., Bau, T., & Li, T. H. (2010). A revised checklist of edible fungi in China. *Mycosystema*, 29(1), 1–21.
- Das, K., Ghosh, A., Chakraborty, D., Li, J., Qiu, L., Baghela, A., et al. (2017). Fungal Biodiversity Profiles 31-40. *Cryptogamie, Mycologie*, 38(3), 1–56.
- Das, K., Sharma, J. R., & Atri, N. S. (2006). *Russula* in Himalaya 3: A new species of subgenus *Ingratula*. *Mycotaxon*, 95, 271–275. <https://doi.org/10.7872/crym/v38.iss3.2017.353>
- Das, K., Van de Putte, K., & Buyck, B. (2010). New or interesting *Russula* from Sikkim Himalaya (India). *Cryptogamie, Mycologie*, 31(4), 373–387.
- Drummond, A. J., Ashton, B., Buxton, S., Cheung, M., Cooper, A., Heled, J., Kearse, M., Moir, R., Stones-Havas, S., Sturrock, S., Thierer, T., & Wilson, A. (2010). Geneious v. 5.1. Available from <http://www.geneious.com> [accessed 4 January 2025]
- Ghosh, A., Buyck, B., Chakraborty, D., Hembrom, M. E., Bera, I., & Das, K. (2023b). Three new species of genus *Russula* Pers. from Sal dominated forests of tropical India based on morphotaxonomy and multigene phylogenetic analysis. *Cryptogamie, Mycologie*, 44(3), 27–50. <https://doi.org/10.5252/cryptogamie-mycologie2023v44a3>
- Ghosh, A., Buyck, B., Das, K., Bera, I., & Chakraborty, D. (2022). Two new Asian species of *Russula* sect. *Ingratae* with unique basidiospore features for subg. *Heterophyllidiae*. *European Journal of Taxonomy*, 847, 104–120. <https://doi.org/10.5852/ejt.2022.847.1985>
- Ghosh, A., Das, K., & Bhatt, R. P. (2023a). The genus *Russula* from Uttarakhand, Western Himalaya: A pictorial Guide. Bishen Singh Mahendra Pal Singh, Dehradun, India, pp. 1–246. ISBN: 978-93-94991-53-8.
- Ghosh, A., Das, K., & Buyck, B. (2021). Two new species in the *Russula* (Russulaceae, Basidiomycota) crown clade from Indian Himalaya. *European Journal of Taxonomy*, 782, 157–172. <https://doi.org/10.5852/ejt.2021.782.1595>
- Ghosh, A., Das, K., Bhatt, R. P., & Hembrom, M. E. (2020). Two new species of the genus *Russula* from western Himalaya with morphological details and phylogenetic estimations. *Nova Hedwigia*, 111(1-2), 115–130. https://doi.org/10.1127/nova_hedwigia/2020/0588
- Han, Y.-X., Liang, Z.-Q., Jiang, S., & Zeng, N.-K. (2022). *Russula hainanensis* (Russulaceae, Russulales), a new species from tropical China. *Phytotaxa*, 552(1), 35–50. <https://doi.org/10.11646/phytotaxa.552.1.3>
- Kalichman, J., Kirk, P. M., & Matheny, P. B. (2020). A compendium of generic names of agarics and Agaricales. *Taxon*, 69(3), 425–447. <https://doi.org/10.1002/tax.12240>
- Kalyaanamoorthy, S., Minh, B. Q., Wong, T. K. F., Heaseler, A. V., & Jermin, L. S. (2017). ModelFinder: Fast model selection for accurate phylogenetic estimates. *Nature Methods*, 14, 587–589. <https://doi.org/10.1038/nmeth.4285>
- Katoh, K., Rozewicki, R., & Yamada, K. D. (2019). MAFFT online service: Multiple sequence alignment, interactive sequence choice and visualization. *Briefings in Bioinformatics*, 20(4), 1160–1166. <https://doi.org/10.1093/bib/bbx108>
- Kornerup, A., & Wanscher, J. H. (1978). *Methuen handbook of colour* (3rd ed.). London: Eyre Methuen Ltd.
- Lee, H., Park, M. S., Jung, P. E., Eimes, J. A., Seok, S. J., & Lim, Y. W. (2017). Re-evaluation of the taxonomy and diversity of *Russula* section *Foetentinae* (Russulales, Basidiomycota) in Korea. *Mycoscience*. <http://dx.doi.org/10.1016/j.myc.2017.04.006>
- Li, G.-J., Li, S.-M., Buyck, B., Zhao, S.-Y., Xie, X.-J., Shi, L.-Y., et al. (2021). Three new *Russula* species in sect. *Ingratae* (Russulales, Basidiomycota) from southern

- China. *MycKeys*, 84, 103–139. <https://doi.org/10.3897/mycokeys.84.68750>
- Melera, S., Ostellari, C., Roemer, N., Avis, P. G., Tonolla, M., Barja, F., & Narduzzi-Wicht, B. (2016). Analysis of morphological, ecological and molecular characters of *Russula pectinatoides* Peck and *Russula praetervisa* Sarnari, with a description of the new taxon *Russula recondita* Melera & Ostellari. *Mycological Progress*. <https://doi.org/10.1007/s11557-016-1256-y>
- Nguyen, L. T., Schmidt, H. A., Von Haeseler, A., & Minh, B. Q. (2015). IQ-TREE: A fast and effective stochastic algorithm for estimating maximum-likelihood phylogenies. *Molecular Biology and Evolution*, 32, 268–274. <https://doi.org/10.1093/molbev/msu300>
- Romagnesi, H. (1985). *Les Russules d'Europe et d'Afrique du Nord*. Reprint with supplement. Lehre: J. Cramer.
- Sarnari, M. (1998). *Monografia Illustrata del Genere Russula in Europa, Prima Parte*. Trento: Associazione Micologica Bresadola.
- Sharma, S., Atri, N. S., Saini, M. K., & Verma, B. (2018). Catalogue of Russulaceous mushrooms of India. *Nova Hedwigia*, 106(3-4), 357–401. https://doi.org/10.1127/nova_hedwigia/2017/0437
- Singer, R. (1986). *The Agaricales in Modern Taxonomy* (4th ed.). Koenigstein: Koeltz Scientific Books.
- Song, Y., Buyck, B., Li, J. W., Yuan, F., Zhang, Z. W., & Qiu, L. H. (2018). Two novel and a forgotten *Russula* species in sect. *Ingratae* (Russulales) from Dinghushan Biosphere Reserve in southern China. *Cryptogamie, Mycologie*, 39, 341–357. <https://doi.org/10.7872/crym/v39.iss3.2018.341>
- Yuan, F., Song, Y., Buyck, B., Li, J., & Qiu, L. (2019). *Russula viridicinnamomea* F. Yuan & Y. Song, sp. nov. and *Russula pseudocatillus* F. Yuan & Y. Song, sp. nov., two new species from southern China. *Cryptogamie, Mycologie*, 40(4), 45–56. <https://doi.org/10.5252/cryptogamie-mycologie2019v40a4>

Disclaimer/Publisher's Note: The statements, opinions and data contained in all publications are solely those of the individual author(s) and contributor(s) and not of the publisher and/or the editor(s). This publisher and/or the editor(s) disclaim responsibility for any injury to people or property resulting from any ideas, methods, instructions or products referred to in the content.

© Copyright (2025): Author(s). The licensee is the journal publisher. This is an Open Access article distributed under the terms of the Creative Commons Attribution License (<http://creativecommons.org/licenses/by/4.0>), which permits unrestricted use, distribution, and reproduction in any medium, provided the original work is properly cited.

Peer-review history:

The peer review history for this paper can be accessed here:

<https://pr.sdiarticle5.com/review-history/131104>